



INSTRUCTIONS

-J04548

REV. 2008-12-10

TOURING DETACHABLE SISSY BAR UPRIGHTS

GENERAL

Kit Numbers

52610-09, 52627-09, 54248-09, 54247-09

Models

For model fitment information, see the P&A retail catalog or the Parts and Accessories section of www.harley-davidson.com (English only).

Additional Parts Required

Separate purchase of additional parts or accessories may be required for proper installation of this Detachable Sissy Bar Upright on this model motorcycle. See the P&A retail catalog or the Parts and Accessories section of www.harley-davidson.com (English only) for a list of required parts or accessories for this model.

WARNING

The rider's safety depends upon the correct installation of this kit. Use the appropriate service manual procedures. If the procedure is not within your capabilities or you do not have the correct tools, have a Harley-Davidson dealer perform the installation. Improper installation of this kit could result in death or serious injury. (00333a)

Kit Contents

See Figure 2 and Table 1.

INSTALLATION

NOTE

The Detachable Sissy Bar Upright can be installed on either a two-point or four-point Docking Kit.

1. If not already in place, install the Detachable Docking Hardware Kit (either two-point or four-point) to the vehicle per the instructions in **that** kit.
2. See Figure 2.
While standing behind the motorcycle, place the left-side and right-side front upright notches (with bushings in place) onto the docking points (A) inboard of the upper shock absorber mounts. Make sure the notch bushings (9) seat fully into the shock absorber docking points.
3. See Figure 2, arrows (D) and (E), and Figure 1. Position the rotary latches (4) over the rear docking points (3).

Check to be sure the upright sides (1) and latches fit into the neck (7) of the rear docking points as shown. This may require some gentle squeezing or spreading of the sissy bar upright sides.

NOTE

After installing the sissy bar upright, check to be sure the sissy bar is secure. The front and rear docking points must be fully engaged. See Figure 1 for correct engagement.

4. Push the rear of the sissy bar downward and close the latches by pressing the latch lever as far forward as it will go. You will hear a "CLICK" when the latch is in place. If the latch does not easily close, do not force. Check the sissy bar alignment again, as described in steps 2 and 3.
5. To remove the sissy bar upright, press the release button (G) on each side and pull the latch levers back. Carefully lift the rear of the sissy bar up and pull the upright out of the front docking points.

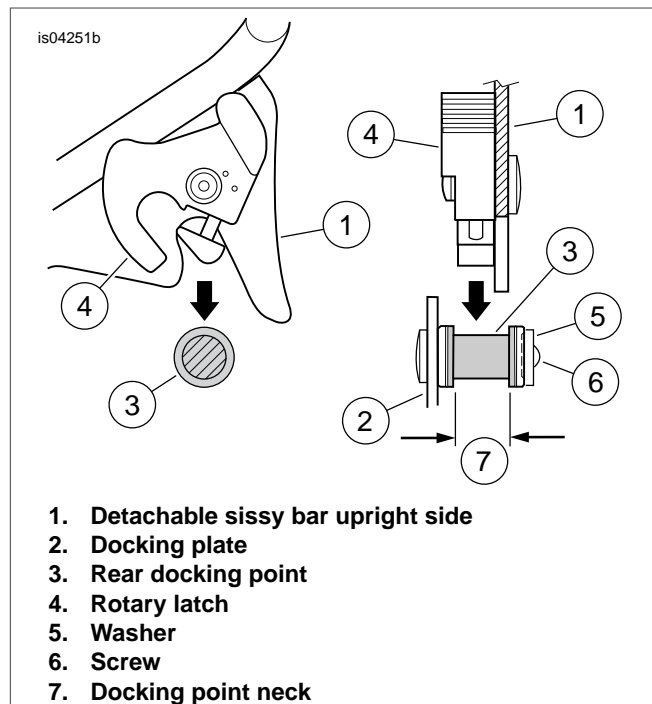


Figure 1. Proper Alignment of Latch in Rear Docking Point, Views in Direction of Arrows (D) and (E)

SERVICE PARTS

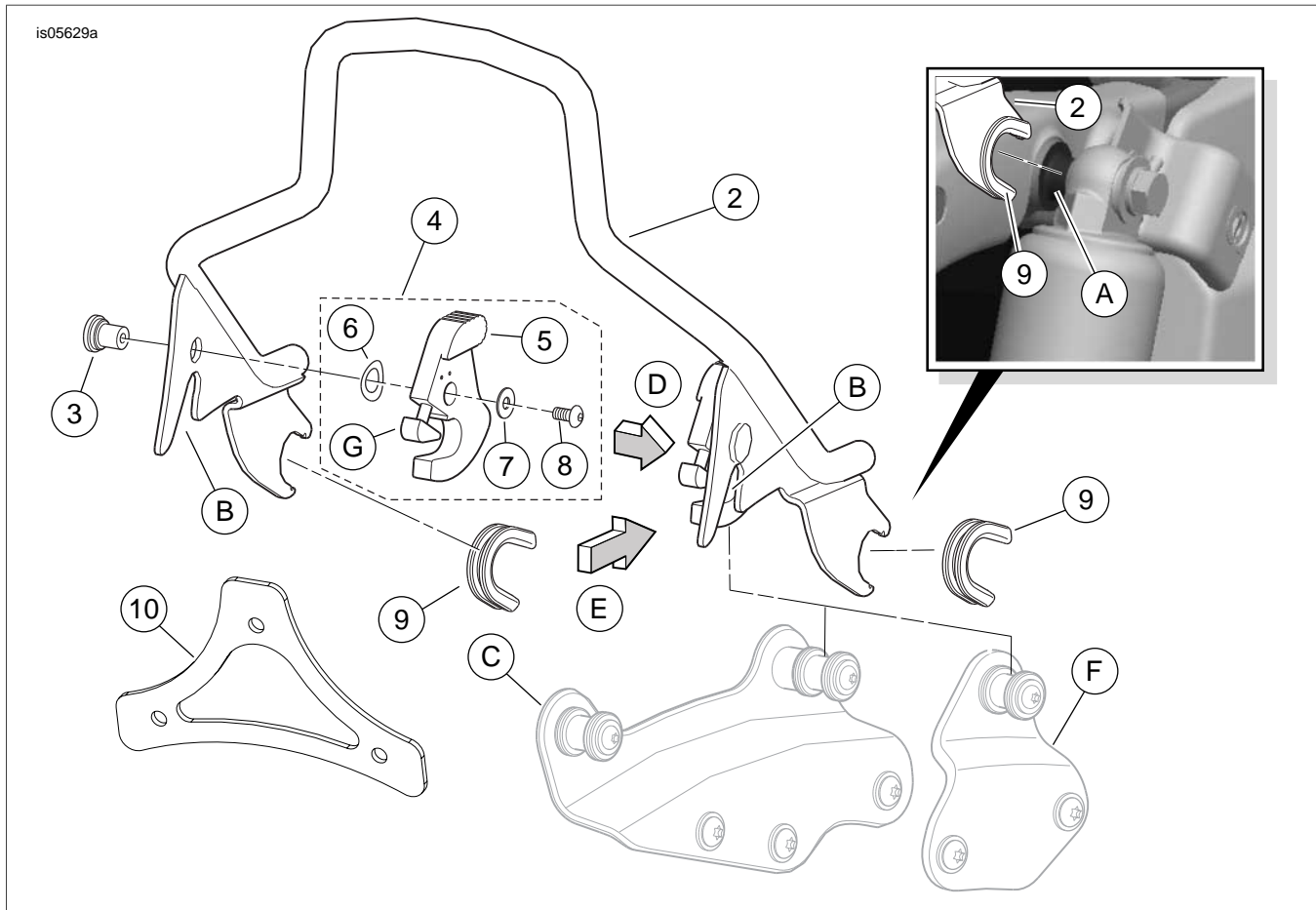


Figure 2. Service Parts: Touring Detachable Sissy Bar Uprights

Table 1. Service Parts Table

Item	Description (Quantity)	Part Number
1	Detachable sissy bar upright assembly (includes items 2, 3, 4)	Not sold separately
2	• Sissy bar upright weldment	Not sold separately
3	• Pivot stud (2)	Not sold separately
4	• Rotary latch kit, right side (not shown. Includes items 5 through 8) • Rotary latch kit, left side (shown. Includes items 5 through 8)	53509-95 53508-95
5	• Rotary latch assembly	Not sold separately
6	• Wave washer	6828
7	• Flat washer, stainless steel	6827
8	• Screw, button head	2957
9	Bushing (2)	52682-09
10	Backrest bracket, gloss black (included with black uprights only)	54083-09
Items mentioned in text, but not included in kit:		
A	Front docking point (2)	
B	Rear sissy bar upright notch (2)	
C	Four-point docking plate assembly (2)	
D	To right side of vehicle (view direction for Figure 1)	
E	To front of vehicle (view direction for Figure 1)	
F	Two-point docking plate assembly (2)	
G	Rotary latch release button (2)	