



# INSTRUCTIONS

-J03958

REV. 2006-05-10

## DYNA OIL COOLER KIT AND CHROME OIL COOLER COVER

### GENERAL

#### Kit Number

26151-07

#### Models

This kit fits 2006 and later Dyna model motorcycles (except California models).

- This kit fits motorcycles equipped with an engine guard.
- This kit **does not** fit motorcycles equipped with chin spoiler (58042-YYXXX).
- This kit **does not** fit motorcycles equipped with Definitive5™ Filtration System (63800-07, 63801-07, or 63802-007).

#### Additional Parts Required

### WARNING

The rider's safety depends upon the correct installation of this kit. Use the appropriate service manual procedures. If the procedure is not within your capabilities or you do not have the correct tools, have a Harley-Davidson dealer perform the installation. Improper installation of this kit could result in death or serious injury. (00333a)

#### NOTE

This instruction sheet references Service Manual information. A Service Manual for your model motorcycle is required for this installation and is available from a Harley-Davidson Dealer.

#### Kit Contents

See Figure 5 and Table 1.

### INSTALLATION

1. See Figure 2. Remove two socket head screws (7) and voltage regulator (8). Discard screws.
2. Remove electrical caddy (9) from regulator bracket of frame.
3. See Figure 1. Remove the spin-on oil filter (2) and oil adapter mounting fitting (1) from oil filter mount location.

Clean the oil filter mounting area thoroughly. Discard oil filter adapter.

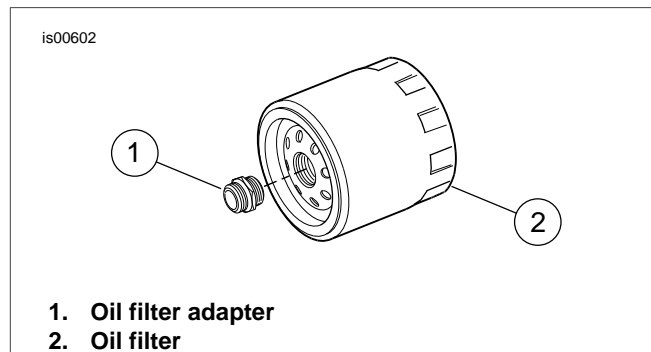


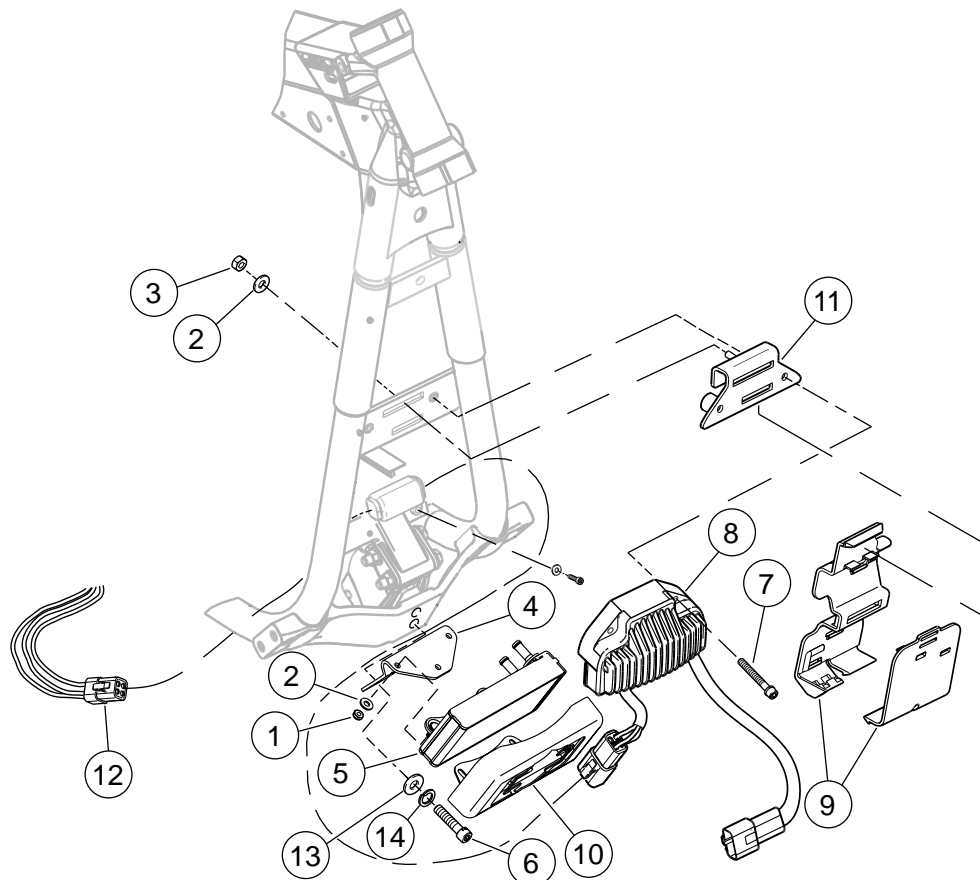
Figure 1. Oil Filter and Adapter

4. See Figure 2. Install electrical caddy (9) to the regulator relocation bracket (11).
5. Install the regulator relocation bracket (11) to the frame using washer (2) and hex nut (3) from the kit. Tighten the nut to 60-80 **in-lbs** (6.8-9.0 Nm).
6. Obtain the oil cooler (5), oil cooler mounting bracket (4), chrome oil cooler cover (10), three washers (2) and three nuts (1). Install oil cooler cover onto oil cooler studs. Place mounting bracket over studs, oriented as shown, and then install the washers and nuts. Tighten the nuts to 96-120 **in-lbs** (10.9-13.5 Nm).

#### NOTE

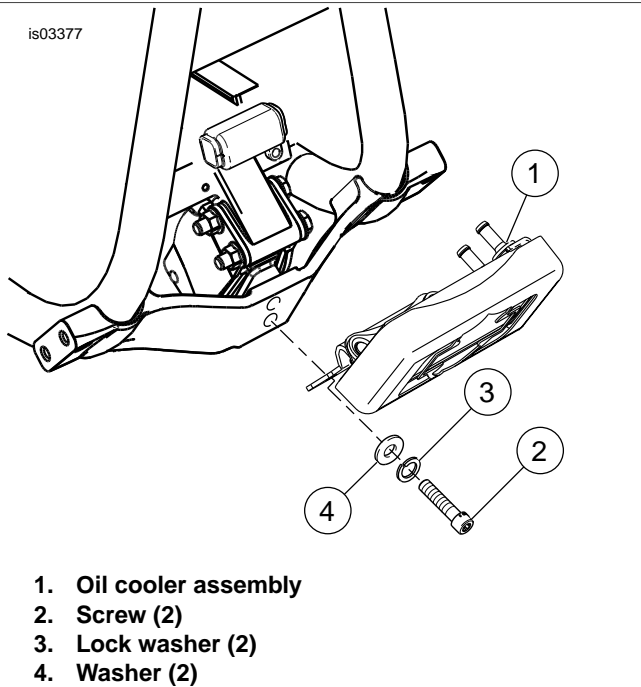
Prior to removing the front isolator hardware, the vehicle must be in an upright and level position. When raising the jack, be sure jack does not contact or pinch the clutch cable.

7. Support front of engine with a piece of soft wood and lifting jack.
8. With motorcycle upright and level and the engine supported by a suitable jack, remove the front isolator bolts, lock washers and washers. Retain hardware for later installation.
9. See Figure 3. Install the oil cooler assembly (1) to the frame using two isolator bolts (2), two washers (4) and two lock washers (3) removed in previous step. Tighten to 21-27 **ft-lbs** (28-36 Nm).



- |                          |                                  |
|--------------------------|----------------------------------|
| 1. Hex nut (3)           | 8. Voltage regulator             |
| 2. Flat washer (4)       | 9. Electric caddy                |
| 3. Hex nut               | 10. Chrome oil cooler cover      |
| 4. Oil cooler support    | 11. Regulator relocation bracket |
| 5. Oil cooler            | 12. Stator connector             |
| 6. Socket head screw (2) | 13. Washer                       |
| 7. Socket head screw (2) | 14. Lock washer                  |

**Figure 2. Regulator Relocation Bracket and Electrical Caddy Installation**



1. Oil cooler assembly
2. Screw (2)
3. Lock washer (2)
4. Washer (2)

**Figure 3. Oil Cooler Assembly**

10. Install the voltage regulator (8) to the regulator relocation bracket (11) and frame using two socket head screws (7) from the kit. Tighten screws to 60-80 **in-lbs** (6.8-9.0 Nm).
11. Secure excess cable/wire harness length to the right side down tube, if necessary.

**NOTE**

*The oil adapter assembly has two flanges protruding out of the back side. The flanges must be installed toward the oil filter mounting location and through the oil adapter gasket.*

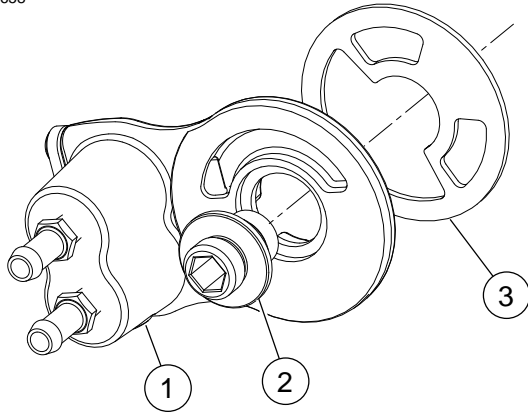
12. See Figure 4. From the kit, install the oil adapter gasket (3) onto the oil filter adapter assembly (1). The oil adapter assembly flanges should be aligned so it is installed into the oil adapter gasket cutout as shown.

**NOTE**

*Position the stator and regulator cables to avoid interference with oil adapter assembly.*

13. See Figure 4. Install the oil adapter assembly and gasket onto the oil filter mounting surface of the engine with the mounting fitting (2). Ensure adapter locates properly in the mounting surface. Ensure the raised lip of the mounting fitting faces the adapter assembly. Tighten mounting fitting to 12-16 **ft-lbs** (16.3-21.7 Nm).

is00658



1. Oil adapter assembly
2. Mounting fitting
3. Oil adapter gasket

Figure 4. Install Oil Adapter

14. See Figure 5. Obtain the bottom hose (12), top hose (11) and four worm drive clamps (7) from kit. Slide two clamps onto each hose and follow the markings on the hoses to connect them onto the oil cooler and oil cooler adapter.
15. Fasten hoses to oil filter adapter and oil cooler with worm drive clamps (7). Tighten clamps to 8.0 **in-lbs** (0.9 Nm).
16. Lubricate oil filter seal with new engine oil. Use Oil Filter Wrench (HD-44067A) to install oil filter. Thread filter on until seal touches mounting surface, then turn an additional 1/2 to 3/4 turn.

**NOTE**

*Position the clamps to avoid interference with oil filter installation. Check that hose routing is clear of the oil filter and sharp edges. The hoses must be free of bends or kinks that could obstruct oil flow.*

17. Using a wire tie secure the clutch cable to the left frame down tube and away from both oil cooler hoses.
18. Ensure all cables and harnesses are clear of the oil adapter, in order to prevent wear.
19. Fill oil to FILL level on dipstick.

## System Flow Test

2005 & Later Models or Models with Later Style Dipsticks

### CAUTION

Oil level cannot be accurately measured on a cold engine. For pre-ride inspection, with motorcycle leaning on jiffy stand on level ground, oil should register on dipstick between arrows when engine is cold. Do not add oil to bring the level to the FULL mark on a COLD engine. (00185a)

2004 & Earlier Models

### CAUTION

Oil level cannot be accurately measured on a cold engine. For pre-ride inspection with the motorcycle upright (not leaning on jiffy stand) on level ground, the oil should register approximately at the midpoint of the cross-hatch area on the dipstick when the engine is cold. Do NOT add oil to bring the level to the FULL mark on a COLD engine. (00186a)

### CAUTION

**Do NOT operate the engine when the oil level is below the add mark on the dipstick at operating temperature. Engine damage will result. (00187a)**

1. Start engine. Examine all hose connections for leaks. If there is no leakage, allow engine to warm up.
2. Check the engine oil level after the engine has warmed up.

**NOTE**

*Position the clamps to avoid interference with oil filter installation. Check that hose routing is clear of the oil filter and sharp edges. The hoses must be free of bends or kinks that could obstruct oil flow.*

3. Verify that temperature of oil cooler increases when engine reaches normal operating temperatures. If the oil cooler remains cool after engine has warmed up, there may be an oil obstruction. Turn off engine and check system for source of obstruction.
4. After engine has cooled, re-tighten all hose clamps to 6 **in-lbs** (0.68 Nm).

## SERVICE PARTS

is03362

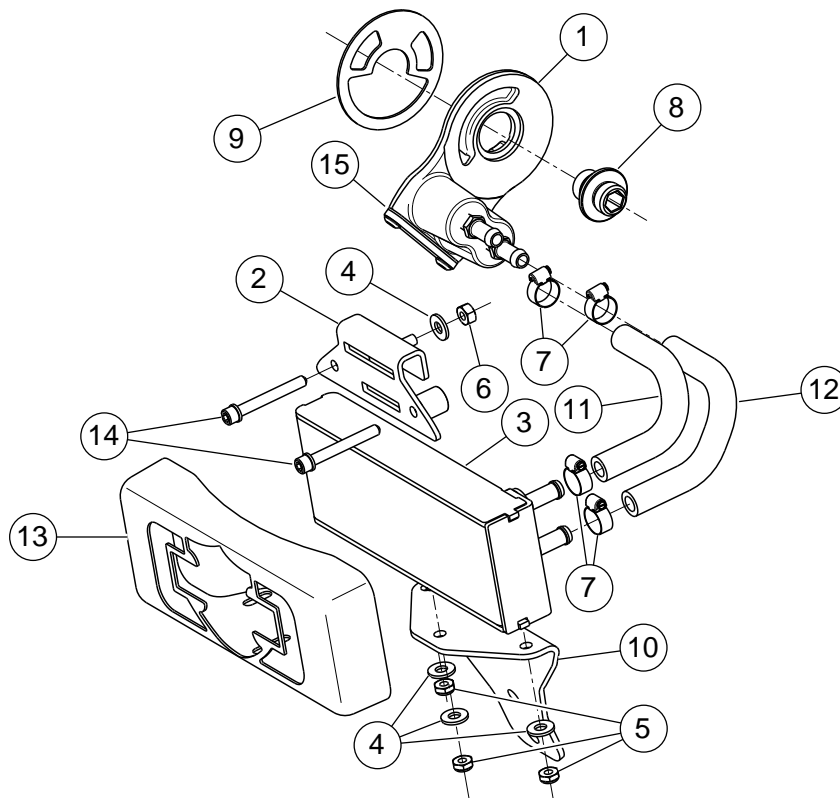


Figure 5. Service Parts for Dyna Oil Cooler Kit and Chrome Oil Cooler Cover

Table 1. Service Parts Table

Item	Description (Quantity)	Part Number
1	Oil adapter assembly	26111-05
2	Bracket, regulator relocation	Not Sold Separately
3	Oil cooler core, Dyna	63068-07
4	Washer (4)	6703
5	Locknut, nylon insert (3)	7671
6	Nut	7688
7	Hose clamp (4)	Not Sold Separately
8	Fitting, oil adapter mounting	26041-05A
9	Gasket, oil adapter	Not Sold Separately
10	Oil cooler support, Dyna	Not Sold Separately
11	Hose, oil, top	Not Sold Separately
12	Hose, oil, bottom	Not Sold Separately
13	Cover, oil cooler	Not Sold Separately
14	Screw, hex socket (2)	4820A
15	Gasket	Not Sold Separately
16	Rubber oil hose service kit (not shown) - contains four clamps (7), top hose (11) and bottom hose (12)	62622-03A
17	Gasket service kit (not shown) - contains gasket (9), gasket (15) and two screws	12056-05