



INSTRUCTIONS

-J03957

REV. 2006-08-28

TOURING OIL COOLER KIT AND CHROME OIL COOLER COVER

GENERAL

Kit Number

26155-07

Models

This kit fits 2007 Touring models.

- This kit **does not** fit with Chrome Display Stand (99001-97A).
- This kit **does not** fit with Definitive5™ Filtration System Kits (63800-07, 63801-07, or 63802-07).
- This kit **does not** fit motorcycles equipped with a sidecar.

Additional Parts Required

⚠ WARNING

The rider's safety depends upon the correct installation of this kit. Use the appropriate service manual procedures. If the procedure is not within your capabilities or you do not have the correct tools, have a Harley-Davidson dealer perform the installation. Improper installation of this kit could result in death or serious injury. (00333a)

NOTE

This instruction sheet references Service Manual information. A Service Manual for your model motorcycle is required for this installation and is available from a Harley-Davidson Dealer.

Kit Contents

See Figure 6 and Table 1.

INSTALLATION

1. See Figure 1. Remove the spin-on oil filter (2) and oil adapter mounting fitting (1) from oil filter mount location. Clean the oil filter mounting area thoroughly. Discard oil filter adapter.

NOTE

The oil adapter assembly has two flanges protruding out of the back side. The flanges must be installed toward the oil filter mounting location and through the oil adapter gasket.

2. See Figure 2. From the kit, install the oil adapter gasket (3) onto the oil filter adapter assembly (1). The oil adapter assembly flanges should be aligned so they are installed into the oil adapter gasket cutout as shown.

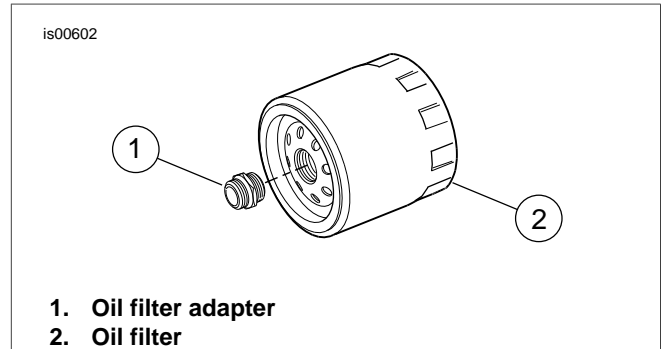


Figure 1. Oil Filter and Adapter

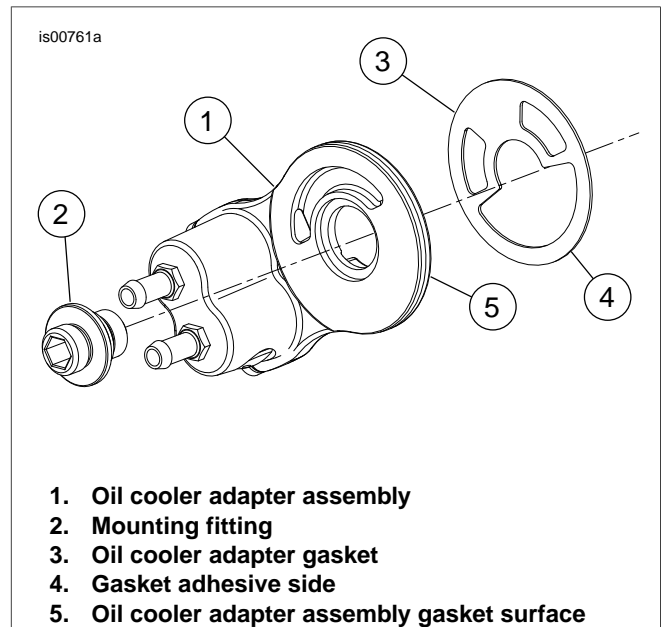


Figure 2. Install Oil Adapter

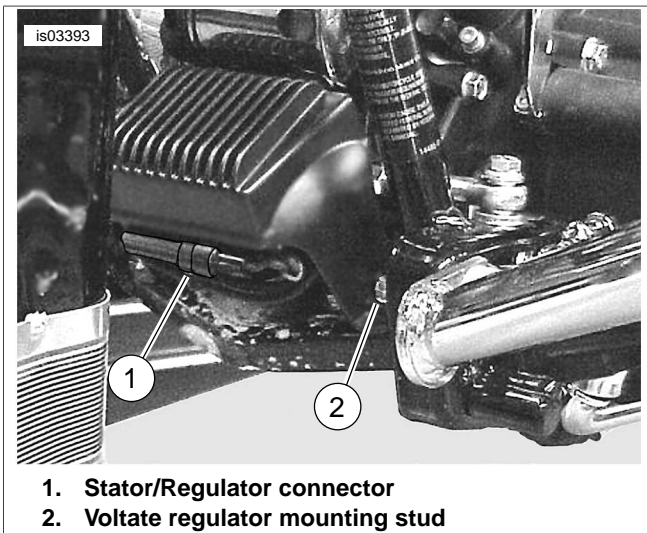


Figure 3. Remove Stator/Regulator Connector

NOTE

Due to the locating flanges, the oil cooler adapter assembly and gasket will only install properly in one position on the oil filter mounting surface.

3. See Figure 2. **If your kit contains a gasket with a "light colored backing"**: Peel backing off of gasket (4) and apply adhesive side to oil cooler adapter assembly (5). Ensure gasket is centered on adapter assembly. Ensure adapter locates properly in the mounting surface. Ensure the raised lip of the mounting fitting faces the adapter assembly. Tighten mounting fitting to 12-16 ft-lbs (16.3-21.7 Nm).
4. See Figure 2. **If your kit contains a standard gasket without a "light colored backing"**: Install the oil cooler adapter assembly and gasket onto the oil filter mounting surface of the engine with the mounting fitting (2). Ensure adapter locates properly in the mounting surface. Ensure the raised lip of the mounting fitting faces the adapter assembly. Tighten mounting fitting to 12-16 ft-lbs (16.3-21.7 Nm).
5. See Figure 3. Remove and disconnect the stator/regulator connector (1) from the bracket on the bottom of the voltage regulator.
6. Remove voltage regulator mounting nuts, washers, and star washers from stud (2) and save for later installation.
7. Remove wiring bracket from studs.
8. Pull upward to remove voltage regulator from mounting studs.
9. See Figure 4. Do not remove P-clip from the stud. Rotate the P-clip together with the stator wiring (2) on left side of vehicle 180 degrees so the stator wire will be re-routed to inside of regulator's left leg.
10. Verify that the stator wiring is routed underneath the engine stabilizer link (1). Leave the end of the stator wiring out near the left frame downtube. Be sure the P-clip on the right hand side is in place, it will not be removed.
11. See Figure 6. Obtain oil cooler (2), oil cooler mounting bracket (9), chrome oil cooler cover (12), three washers (3) and three nuts (4). Install the oil cooler cover over the oil cooler studs, then install the mounting bracket over the

studs. Secure the bracket and cover to the oil cooler with the three washers and three nuts. Tighten the nuts to 96-120 **in-lb** (10.8-13.5 Nm).

12. Install the oil cooler mounting bracket onto the regulator mounting studs. Place the wire mounting bracket on top of the oil cooler mounting bracket, then install the voltage regulator on the studs over the oil cooler bracket. Secure the regulator using the hardware previously removed, but do not tighten at this time.
13. See Figure 5. Connect stator (1) and regulator (2) wiring connectors, then position the connector onto the bracket on bottom of the voltage regulator.
14. Tighten regulator nuts to 84-120 **in-lbs** (9.5-13.6 Nm).
15. See Figure 6. Obtain the long hose (11), short hose (10) and four clamps (6) from kit. Slide two clamps onto each hose and follow the markings on hoses to connect onto the oil cooler and oil cooler adapter.
16. Fasten hoses to oil filter adapter and oil cooler with worm drive clamps (6). Tighten clamps to 8.0 **in-lbs** (0.9 Nm).

NOTE

Using an oil filter wrench (HD-44067A) will prevent damage to the crankshaft position sensor. Position the clamps to avoid interference with oil filter installation. Ensure the hose routing is clear of the of the oil filter and any sharp edges. The hoses must be free of bends or kinks that could obstruct oil flow.

17. Ensure that all cables and harnesses are clear of the oil cooler adapter, in order to prevent wear.
18. Lubricate oil filter seal with new engine oil. Thread filter on until seal touches mounting surface, then turn an additional 1/2 to 3/4 turn.
19. Add oil to FILL level on dipstick.
20. Start the motorcycle and check for oil leaks on and around installed parts. Add oil as needed.

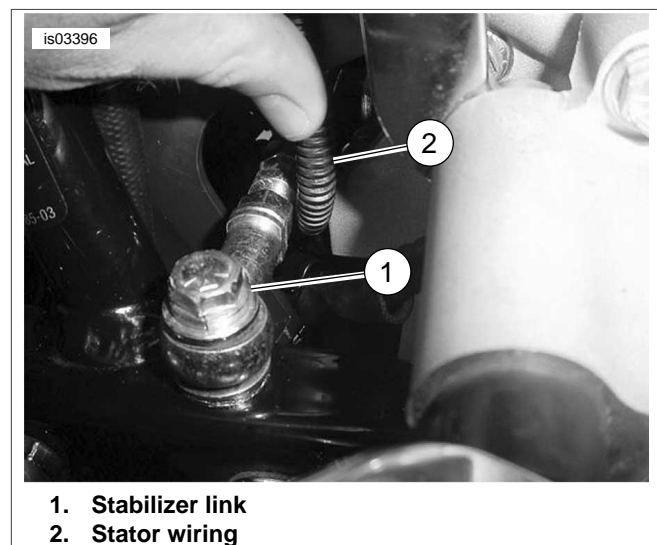


Figure 4. Stator Wiring and P-Clip

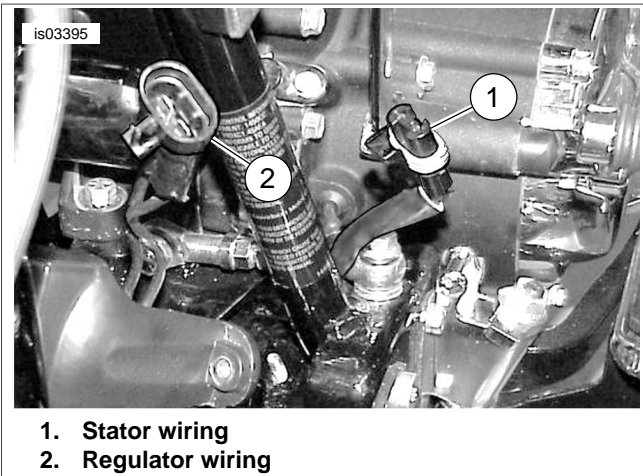


Figure 5. Stator and Regulator Wiring

System Flow Test

2005 & Later Models or Models with Later Style Dipsticks

CAUTION

Oil level cannot be accurately measured on a cold engine. For pre-ride inspection, with motorcycle leaning on jiffy stand on level ground, oil should register on dipstick between arrows when engine is cold. Do not add oil to bring the level to the FULL mark on a COLD engine. (00185a)

2004 & Earlier Models

CAUTION

Oil level cannot be accurately measured on a cold engine. For pre-ride inspection with the motorcycle upright (not leaning on jiffy stand) on level ground, the oil should register approximately at the midpoint of the cross-hatch area on the dipstick when the engine is cold. Do NOT add oil to bring the level to the FULL mark on a COLD engine. (00186a)

CAUTION

Do NOT operate the engine when the oil level is below the add mark on the dipstick at operating temperature. Engine damage will result. (00187a)

1. Start engine. Examine all hose connections for leaks. If there is no leakage, allow engine to warm up.

NOTE

Position the clamps to avoid interference with oil filter installation. Check that hose routing is clear of the oil filter and sharp edges. The hoses must be free of bends or kinks that could obstruct oil flow.

2. Verify that temperature of oil cooler increases when engine reaches normal operating temperatures. If the oil cooler remains cool after engine has warmed up, there may be an oil obstruction. Turn off engine and check system for source of obstruction.
3. After engine has cooled, re-tighten all hose clamps to 8.0 in-lb (0.9 Nm).
4. Fill oil to FILL level on dipstick.

SERVICE PARTS

is03390

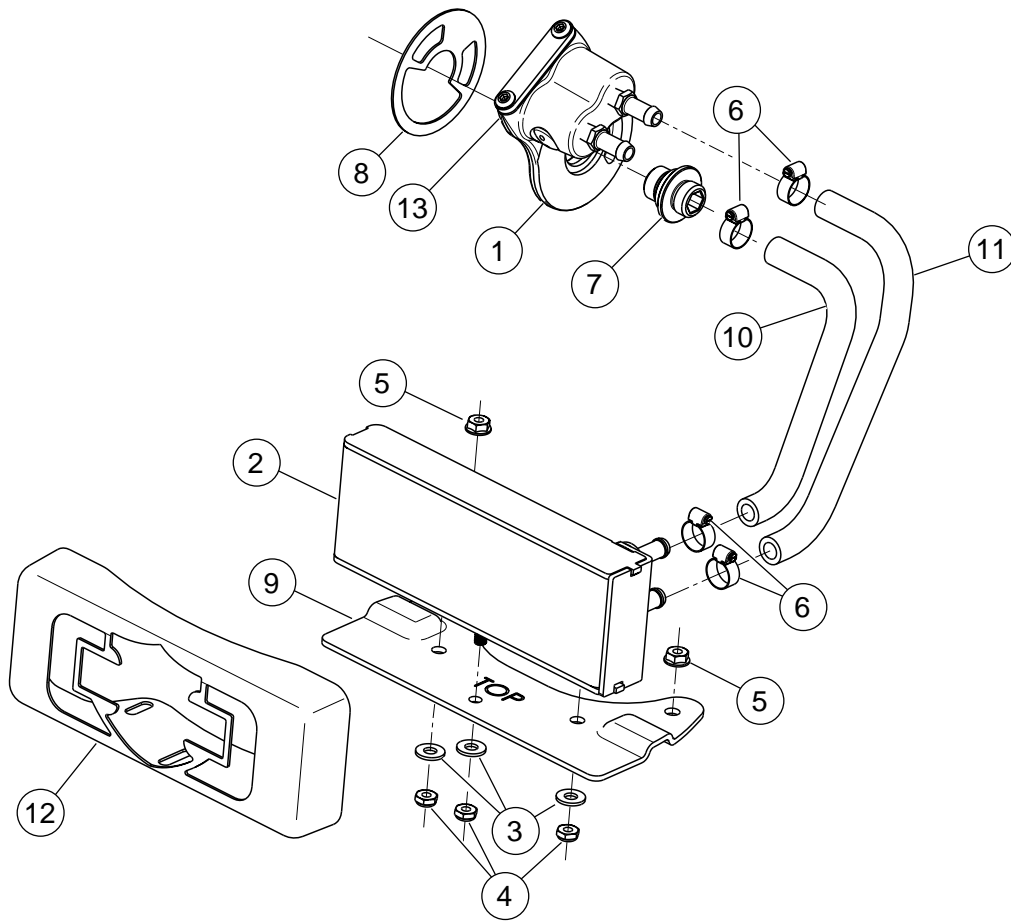


Figure 6. Service Parts for Touring Oil Cooler Kit with Chrome Oil Cooler Cover

Table 1. Service Parts Table

| Item | Description (Quantity) | Part Number |
|------|--|---------------------|
| 1 | Adapter assembly, oil cooler | 26154-07 |
| 2 | Oil cooler core | 63068-07 |
| 3 | Washer (3) | 6703 |
| 4 | Locknut, nylon insert (3) | 7671 |
| 5 | Flange nut (2) | 7716 |
| 6 | Clamp, worm drive (4) | 9823 |
| 7 | Adapter, oil filter | 26041-05A |
| 8 | Gasket, oil cooler adapter | Not Sold Separately |
| 9 | Mounting bracket, oil cooler | 62108-03 |
| 10 | Hose, preformed, short | Not Sold Separately |
| 11 | Hose, preformed, long | Not Sold Separately |
| 12 | Cover, oil cooler | 63056-07 |
| 13 | Gasket | Not Sold Separately |
| 14 | Rubber oil hose service kit (not shown) - contains four clamps (6), long hose (11) and short hose (12) | 62658-05 |
| 15 | Gasket service kit (not shown) - contains gasket (8), gasket (13) and two screws | 12056-05 |