



INSTRUCTIONS

-J03679

REV. 2006-11-08

AUXILIARY BRAKE/RUN/TURN SIGNAL CONVERTER KIT

GENERAL

Kit Number

69465-06

Models

For model fitment information, please see the P&A Retail Catalog or the Parts and Accessories section of www.harley-davidson.com (English only).

WARNING

The rider's safety depends upon the correct installation of this kit. Use the appropriate service manual procedures. If the procedure is not within your capabilities or you do not have the correct tools, have a Harley-Davidson dealer perform the installation. Improper installation of this kit could result in death or serious injury. (00333a)

NOTE

This instruction sheet references Service Manual information. A Service Manual for your model motorcycle is required for this installation and is available from a Harley-Davidson Dealer.

NOTE

Red turn signal lenses may not be legal in all states. Check your local regulations.

Kit Contents

Table 1. Kit Contents

Description (Quantity)	Part Number
Cable strap (4)	10006
Screw, hex cap (2)	2818
Lens, red (2)	68217-00
Support, rear directional lamp	68293-00
Tail light/Turn signal module	69467-06A

WARNING

When installing any electrical accessory, be certain not to exceed the maximum amperage rating of the fuse or circuit breaker protecting the affected circuit being modified. Exceeding the maximum amperage can lead to electrical failures, which could result in death or serious injury. (00310a)

NOTE

This kit requires up to 4.5 amps additional current from the brake light circuit while brakes are applied.

CAUTION

It is possible to overload your motorcycle's charging system by adding too many electrical accessories. If your combined electrical accessories operating at any one time consume more electrical current than your vehicle's charging system can produce, the electrical consumption can discharge the battery and cause vehicle electrical system damage. See a Harley-Davidson dealer for advice about the amount of current consumed by additional electrical accessories, or for necessary wiring changes. (00211b)

INSTALLATION

WARNING

To prevent accidental vehicle start-up, which could cause death or serious injury, disconnect negative (-) battery cable before proceeding. (00048a)

WARNING

Disconnect negative (-) battery cable first. If positive (+) cable should contact ground with negative (-) cable connected, the resulting sparks can cause a battery explosion, which could result in death or serious injury. (00049a)

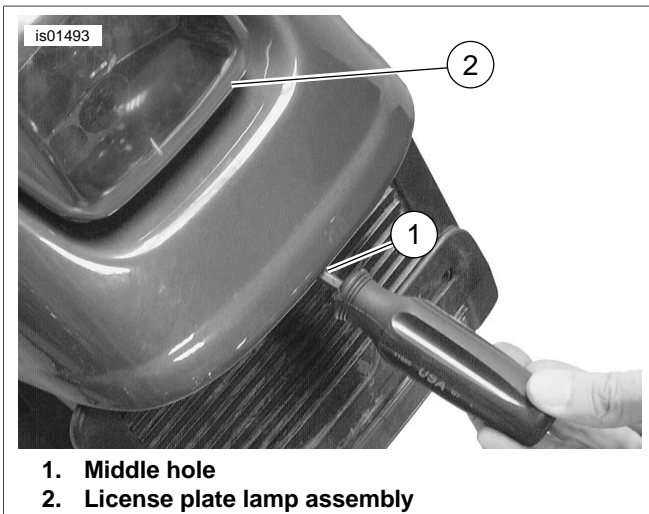
1. Disconnect the battery cables, negative side first.
2. Remove the seat according to the procedures in the applicable Service Manual.

NOTE

Federal regulations require that red turn signal lenses need to be a minimum of 4 inches from the tail or stop lamp, edge to edge. In order to ensure this spacing requirement, new directional stand-offs are provided in kit and must be used to replace the original (stock) directional stand-offs.

To install the new directional stand-offs, perform the following.

3. See Figure 1. Insert a small screwdriver into middle hole (1) of license plate light cover assembly (2). Push forward to release tail lamp spring clip.



1. Middle hole
2. License plate lamp assembly

Figure 1. Removing Tail/Stop Lamp Assembly

4. See Figure 2. Lift tail lamp assembly upward and disconnect tail lamp connector (1). Disconnect left (2) and right (3) turn signal 2-place connectors.
5. See Figure 3. Remove two left side fender support front socket head screws (1). Save hardware for installation.
6. Remove left fender support cap screw (2) (under fender) near end of support and washer (3). Remove cap screw (4) at approximate midpoint of fender support and washer (5). Save hardware for installation.
7. Remove directional lamp screw (6) and washer (7).

NOTE

Prior to removing turn signal wires, carefully note routing. In particular, pay close attention to the locations of cable straps which must be replaced.

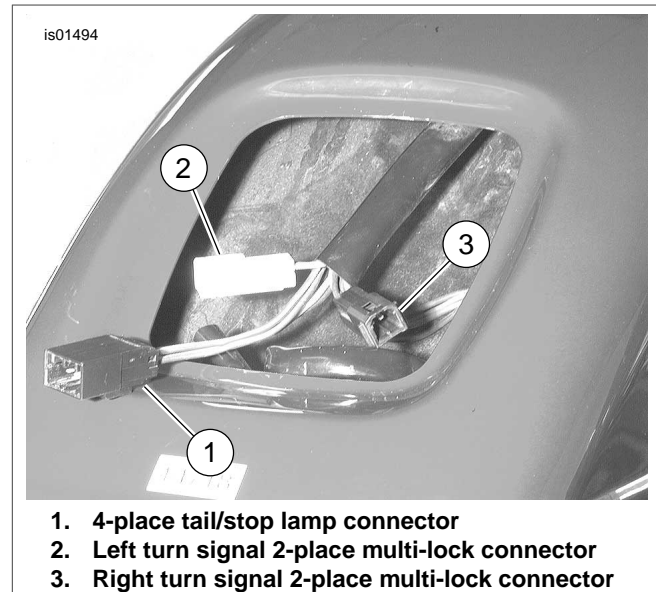
8. Carefully remove fender support (8), turn signal lamp (9) and directional lamp support (10) along with wiring through elongated hole in fender (11). Discard directional lamp support and cap screw. Save turn signal lamp for installation.
9. Perform Steps 5 through 8 for the right fender support and signal lamp assembly.

NOTE

At this point, the two turn signal pin terminals must be removed from the two-place connector in order to remove the turn signal and directional stand-off from the fender support. The pin terminals will be re-installed to the connector after routing wiring through new directional stand-off and installing stand-off and

turn signal to fender support. Follow the instructions under AMP MULTILOCK CONNECTORS in the applicable Service Manual to remove the pin terminals from the two-place connector.

10. See Figure 3. Obtain new directional stand-off and cap screw from kit. Route wiring from turn signal lamp (9) through new directional lamp support (10) and elongated fender support hole (11). Install cap screw (6) through fender support, new directional lamp support then into turn signal. Tighten cap screw securely.



1. 4-place tail/stop lamp connector
2. Left turn signal 2-place multi-lock connector
3. Right turn signal 2-place multi-lock connector

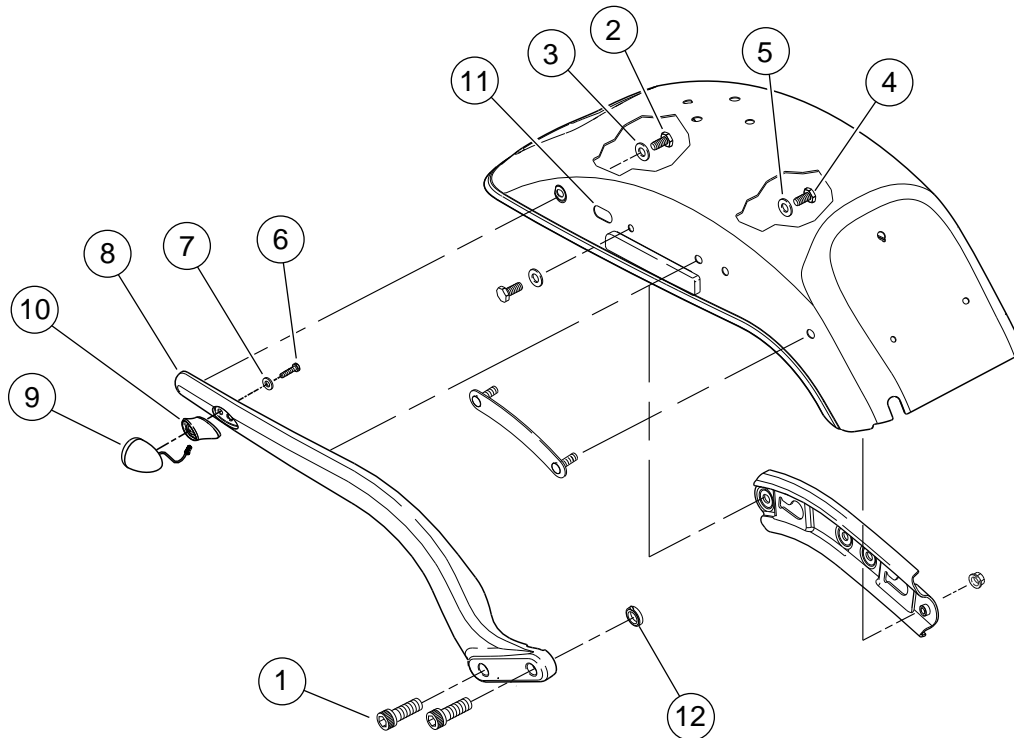
Figure 2. Disconnect Tail Lamp and turn Signal Connectors

11. Perform step 10 for the right side.

NOTE

At this time, the signal wiring pin terminals are re-installed to the connectors. Follow instructions in applicable Service Manual under AMP MULTILOCK CONNECTORS and install pin terminals to connectors. For terminal location purposes, when facing the secondary lock side and with button up, the black wire pin terminal inserts into the left side of the connector; the purple wire pin terminal inserts into the right side of the connector. The left turn signal utilizes the White 2-place connector; the right turn signal utilizes the Black 2-place connector.

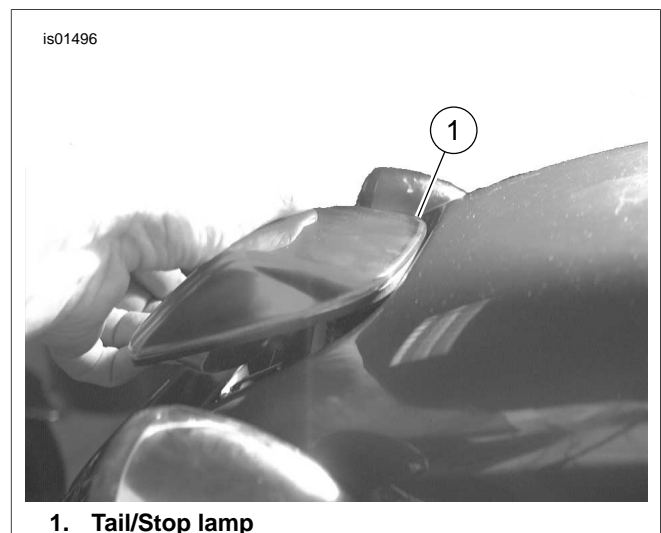
12. See Figure 3. Install socket head cap screws (1) at front of fender support (8). Finger tighten. Make certain that the spacer (12) is in the forward most hole on the inside of the fender support.



1. Fender support socket head screws (2)
2. Left fender support cap screw
3. Washer
4. Midpoint fender support screw
5. Washer
6. Screw
7. Washer
8. Fender support
9. Turn signal lamp
10. Directional lamp support
11. Elongated fender hole
12. Spacer

Figure 3. Rear Fender Support and License Plate Bracket Assembly (right view shown)

13. Install original cap screws and washers through fender at midpoint (4,5) and near end of fender support (2,3). Make sure fender support does not bind or pinch turn signal wiring. Tighten cap screws to 12-15 ft-lbs (16.3-21.7 Nm).
14. Return to socket head cap screws at front of support and tighten to 14-16 ft-lbs (19.0-21.7 Nm).
15. Refer to Figure 2. Insert left turn signal connector (2) (White, 2-place) into left turn signal harness connector (White, 2-place) until it snaps.
16. Perform Steps 13 through 15 for the right fender support assembly however in Step 15, the turn signal connectors are black.
17. Connect tail/stop lamp harness connector (1) (White 4-place) to harness connector (Black, 4-place).
18. See Figure 4. Align tail/stop lamp (1) with cutout in fender as shown. Insert upper spring into place and with index finger, push upward slightly on lower spring while firmly pressing assembly toward fender. Assembly is secure when upper and lower springs "click".



1. Tail/Stop lamp

Figure 4. Install Tail/Stop Lamp Assembly

19. Obtain red turn signal lenses from kit. Firmly grasp existing turn signal lens and pull from turn signal housing. Install red lens to housing. Repeat for the opposite signal lens.

20. See Figure 5. Locate rear wiring harness coming out of rear fender (under seat). Disconnect rear fender wiring connector (1) from harness.

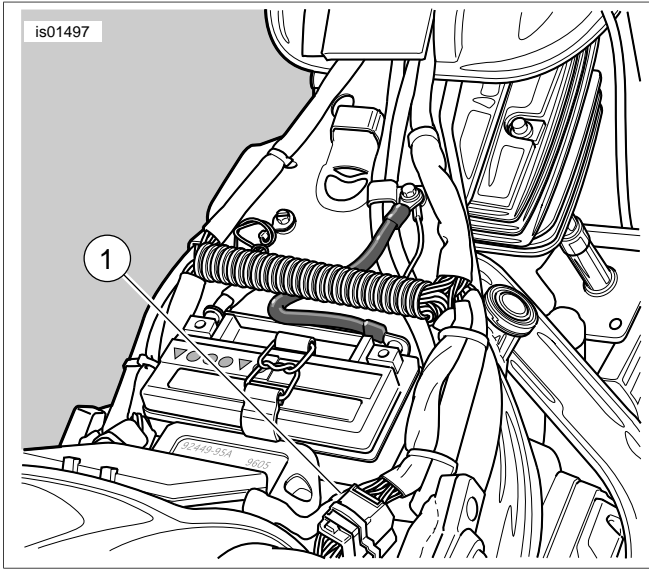


Figure 5. Rear Wiring Harness

21. Obtain turn signal converter module from kit. Mate module connectors to male and female wiring harness connections and snap connectors into place.

NOTE

When deciding on a location for securing the module, make sure connectors and module will not be bound and wiring will

not be pinched when seat is reinstalled. Also, be certain to maintain clearance between wiring harness and rear wheel underneath fender.

22. Using cable ties, secure module, connector and wiring to area underneath seat.

⚠ WARNING

Connect positive (+) battery cable first. If positive (+) cable should contact ground with negative (-) cable connected, the resulting sparks can cause a battery explosion, which could result in death or serious injury. (00068a)

23. Connect the battery cables, positive cable first.

⚠ WARNING

Be sure that all lights and switches operate properly before operating motorcycle. Low visibility of rider can result in death or serious injury. (00316a)

24. Turn on motorcycle and make sure that both turn signals and brake light all function properly.

⚠ WARNING

After installing seat, pull upward on seat to be sure it is locked in position. While riding, a loose seat can shift causing loss of control, which could result in death or serious injury. (00070b)

25. Install seat.