



INSTRUCTIONS

-J02977

REV. 2009-08-12

SCREAMIN' EAGLE PERFECT FIT PUSHRODS

GENERAL

Kit Number

18400-03, 18401-03, 18402-03, 18403-03, 18416-03

NOTE

The installation of a kit may void the Harley-Davidson limited warranty.

Models

For model fitment information, see the P&A Retail Catalog or the Parts and Accessories section of www.harley-davidson.com (English only).

Additional Parts Required

Separate purchase and installation of additional parts or accessories may be required for proper installation of this kit on your model motorcycle. See the P&A Retail Catalog or the Parts and Accessories section of www.harley-davidson.com (English only) for a list of required parts or accessories for your model.

⚠ WARNING

The rider's safety depends upon the correct installation of this kit. Use the appropriate service manual procedures. If the procedure is not within your capabilities or you do not have the correct tools, have a Harley-Davidson dealer perform the installation. Improper installation of this kit could result in death or serious injury. (00333a)

NOTE

This instruction sheet references service manual information. A service manual for your model motorcycle is required for this installation and is available from a Harley-Davidson Dealer.

Kit Contents

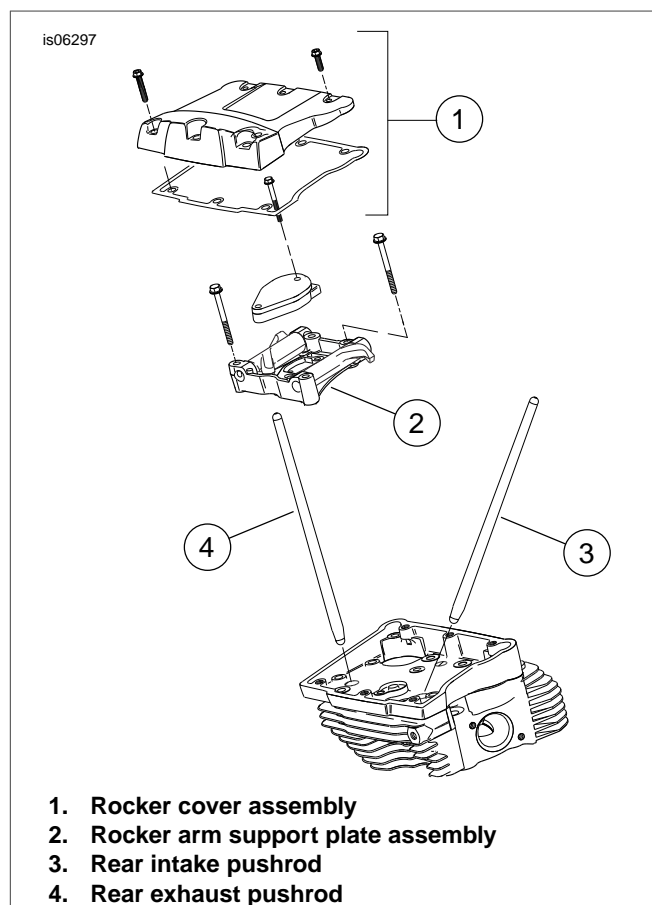
Table 1.

Kit#	Description	Part No.	Length
18400-03	Pushrod Intake	18405-03	Stock
	Pushrod Exhaust	18406-03	Stock
18401-03	Pushrod Intake	18407-03	+ .030
	Pushrod Exhaust	18408-03	+ .030
18402-03	Pushrod Intake	18409-03	- .030
	Pushrod Exhaust	18410-03	- .030
18403-03	Pushrod Intake	18411-03	- .060
	Pushrod Exhaust	18412-03	- .060
18416-03	Pushrod Intake	18414-03	+ .060
	Pushrod Exhaust	18415-03	+ .060

There are no Service Parts available with this kit.

NOTE

For application information see the Twin Cam Perfect Fit Pushrod Application chart in the Screamin' Eagle Pro Racing Parts catalog.



1. Rocker cover assembly
2. Rocker arm support plate assembly
3. Rear intake pushrod
4. Rear exhaust pushrod

Figure 1. Push Rods

INSTALLATION

⚠ WARNING

To prevent accidental vehicle start-up, which could cause death or serious injury, disconnect negative (-) battery cable before proceeding. (00048a)

1. Refer to the service manual and follow the instructions given for disassembling the motorcycle for service and to gain access to the top end overhaul disassembly of seat, rocker cover, breather assembly, rocker arm support plate and pushrods.
2. Place the motorcycle on a center stand with the rear wheel raised off the ground. Remove the spark plugs.

3. With the transmission in gear, use the rear wheel to turn the engine over until both front cylinder tappets are at their lowest point. Remove and discard the pushrods.
4. Install the new pushrods into the pushrod covers using the appropriate service manual procedures. Be sure the larger end of the tapered pushrods are installed to the tappet sockets.
5. Repeat step 4 for the rear cylinder.
6. Complete all the appropriate service manual procedures for assembling the engine.
7. Complete all service manual procedures for the assembly of the motorcycle.
8. Return the transmission to neutral and install the spark plugs.
9. Connect the negative (-) battery cable.

NOTE

Check for contact between the pushrods and the upper pushrod covers. Check by rotating the engine slowly until both valves have fully opened and closed on the cylinder you are checking. If contact is observed, the rocker arm supports should be shifted toward the engine's cam side.

 WARNING

After installing seat, pull upward on seat to be sure it is locked in position. While riding, a loose seat can shift causing loss of control, which could result in death or serious injury. (00070b)

10. Install the seat.