



# INSTRUCTIONS

-J01600

REV. 2005-06-08

## PASSING LAMP TRIM RINGS

### GENERAL

#### Kit Number

69622-99B, 69732-05

#### Models

These kits fit 1962 and later Harley-Davidson motorcycles equipped with original equipment or accessory Auxiliary Lamp Kits.

#### Kit Contents

See Figure 1 and Table 1.

### INSTALLATION

- Loosen the screw from one original equipment passing lamp trim ring and remove the ring.
- See the Service Parts illustration. Remove the screw (3) and nut (2) from the accessory trim ring (1) and set aside temporarily.
- If not already installed, place the rubber strip (4) inside the trim ring. Align so the gap in the rubber strip is opposite the split in the trim ring as shown.
- Insert the passing lamp sealed unit (C) inside the new trim ring and rubber strip assembly.

#### NOTE

*Rotating the lamp unit may help insertion.*

- Position the bottom of the lamp unit to line up with the split in the trim ring.

#### 6. For 2002 and later models

Install the adapter ring (D) onto the passing lamp housing, lining up the tab on the ring with the notch in the lamp housing.

Install the trim ring and lamp assembly onto the adapter ring, aligning the lug (or lugs) on the back of the glass lamp unit with the notches in the adapter ring.

#### For 1962 through 2001 models

Install the trim ring and lamp assembly onto the passing lamp housing, aligning the lug (or lugs) on the back of the glass lamp unit with the notches in the passing lamp housing.

- Assemble the screw and nut to the trim ring and tighten securely.
- Perform steps 1 through 7 for the second passing lamp.

### SERVICE PARTS

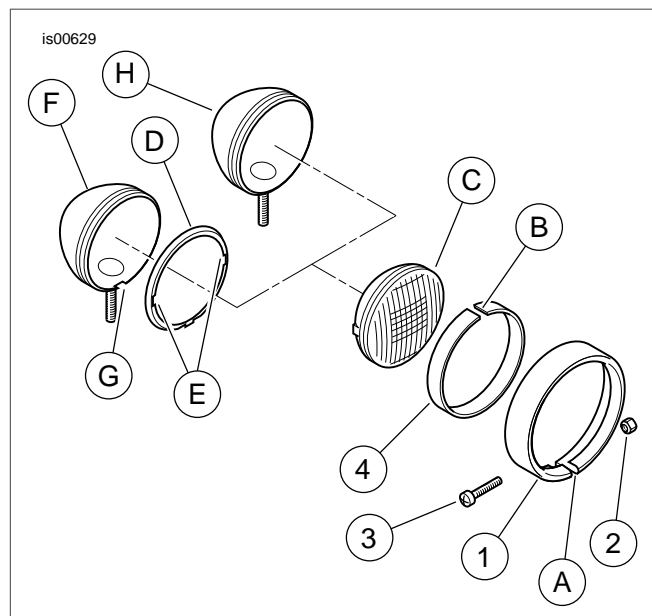


Figure 1. Passing Lamp Trim Rings

Table 1. Service Parts: Passing Lamp Trim Rings

Item	Description (Quantity)	Part Number
1	Trim Ring	Not Sold Separately
2	Nut (M4)	8006
3	Screw (M4 x 35 mm)	3824
4	Rubber Strip (1.25" x 1.25")	69678-00
A	Split in trim ring	Reference only
B	Gap in rubber strip	Reference only
C	Passing lamp sealed unit	Reference only
D	Adapter ring (2002 and later)	Reference only
E	Alignment notches	Reference only
F	Passing lamp housing (2002 and later)	Reference only
G	Alignment notch	Reference only
H	Passing lamp housing (1962-2001)	Reference only