



INSTRUCTIONS

-J01369

REV. 2005-09-12

7 INCH HEADLAMP TRIM RING

GENERAL

Kit Number

69627-99 and 69733-05

Models

These kits fit 1983 and later Touring motorcycles (except Tour Glide and Road Glide). Kits also fit 1994 and later FLHR models, and 1986 and later FLST models with accessory Chrome Headlight Nacelle (Part Number 67907-96).

Kit Contents

See Table 1 and Figure 1.

Table 1. Kit Contents

Item	Description	Part Number
1	Screw	3824
2	Nut	8006
3	Trim ring	Not Sold Separately

INSTALLATION

1. Loosen original equipment trim ring screw.

NOTE

If the original equipment trim ring screw is not loosened, the accessory trim ring will not fit properly.

2. Slip new trim ring over original equipment trim ring. The lip on the back of the accessory ring should slip between headlamp housing and original equipment trim ring.

NOTE

See Figure 1. Screw and nut may need to be removed to allow trim ring to slip over original equipment trim ring. Position mounting screw of accessory trim ring at bottom of headlamp.

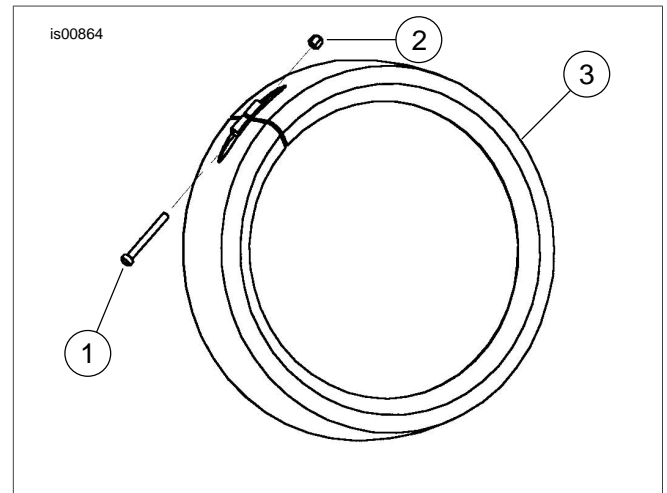


Figure 1. Headlamp Trim Ring

3. Tighten original equipment ring screw.
4. Tighten accessory trim ring screw.