



# INSTRUCTIONS

-J00300

REV. 10-1-94

Kit Number 58006-87B

## WINDSHIELD KIT

### General

This kit is designed for installation on 1987 FXLR, FXRS-SP models and all 1988 and later XLH, FXR, FXD (except FXDWG) models. All these motorcycles have 39mm front forks.

This kit contains the following components:

QTY	DESCRIPTION
1	Windshield assembly (See Service parts list for parts in assembly.)
6	Cable strap
1	Wire, 2-conductor, polarized, 36 in. length
1	Wire, single conductor, blue, 12 in. length
1	Wire, single conductor, violet, 12 in. length
1	Wire, single conductor, black, 12 in. length
4	Bolt, shoulder
1	Lower window
1	Bracket, windshield, right side
1	Bracket, windshield, left side
2	Clamp, windshield
14	Heat shrink tubing
13	Connector electrical
1	Conduit, plastic, 5/16 in. diameter, 17 in. length
4	Locknut, 1/4-20
4	Locknut, 5/16-18
4	Washer, flat 5/16 in. inner diameter
4	Screw, 5/16-18 X 3/4 in.

### Installation

#### WARNING

**Inspect this windshield upon completion of installation to be certain windshield mounting does not restrict full left or full right movement of the front fork assembly. Restricted fork movement could cause loss of control and personal injury. If restriction does occur, adjust windshield as needed until clearance is obtained. Have experienced Harley-Davidson service personnel correct any problems before riding with this accessory installed.**

#### NOTE

*If your motorcycle has directional lights mounted on the upper fork bracket they must be relocated to the bottom fork bracket. The 1995 XLH 883 has front directional lights equipped with three wires, the third black wire is a ground wire. Check to determine how many wires are connected to the front directional lights and follow the following procedure that applies. If directional lights are not mounted on the upper fork bracket proceed to "INSTALLING WINDSHIELD".*

### RELOCATING TWO WIRE DIRECTIONAL LIGHTS

1. Support motorcycle on a center stand such that front wheel is raised slightly off the ground.
2. Remove fork tube pinch screw from right side of lower bracket.
3. Cut wires connected to right directional light about 2 in. away from directional light body.
4. Remove fork tube pinch screw from right side of upper fork bracket. (This is the screw that secures the right directional light.)
5. Install right directional light on right side of lower fork bracket using pinch screw removed in step 4. Install pinch screw removed in step 2 into right side of upper bracket. Tighten both pinch screws to 30-35 ft-lbs.
6. Repeat steps 1 through 5 to relocate left directional light.

#### NOTE

*Fork tubes may slide downward within fork brackets. If this occurs, front fork tube extension above front fork upper bracket will have to be readjusted according to appropriate Service Manual procedures.*

7. Connect the right directional light as follows: Strip approximately 5/16 in. insulation from the wires cut in step 3.
8. Crimp solderless connectors from kit on two wires coming from motorcycle.
9. Split one end of the 2-conductor polarized wire from kit back about 2 in. and strip 5/16 in. of insulation from wire ends.
10. Slide a piece of shrink tubing from kit over each of the wire ends stripped in step 9 and crimp the wires into the terminals installed in step 8. **Make sure you connect the silver and copper colored wires to like colored wires.**

#### NOTE

*Polarized wire is used in this application to ensure correct wiring. One wire is silver, one is copper colored. Wire colors of spliced wire must match wire color of original directional wire leads.*

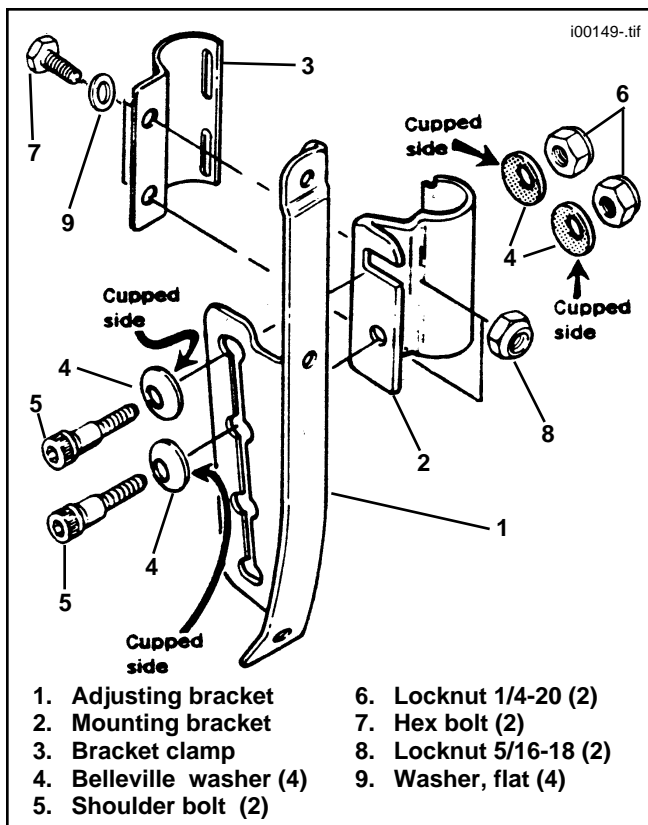


Illustration. Windshield Hardware - Right Side

11. Cut polarized wires to the length required for connection to the wires at the relocated directional light. **Make certain you leave enough slack in wires to allow routing the harness along the fork tube.**
12. Split remaining end of the 2-conductor polarized wire from kit back about 2 in. and strip 5/16 in. of insulation from wire ends.
13. Slide heat shrink tubes over the two wire end.
14. Strip 5/16 in. of insulation from wires connected to directional light and connect like colored wires at directional light with connectors from kit.
15. Slide heat shrink tubing over connectors installed in steps 10 and 14. Activate shrink tubing with heat gun or hair dryer.
16. Position harness along fork tube and secure with cable straps.
17. Repeat steps 7 through 16 for left directional light.
18. Continue at "INSTALLING WINDSHIELD".

#### RELOCATING THREE WIRE DIRECTIONAL LIGHTS

1. Support motorcycle on a center stand such that front wheel is raised slightly off the ground.

2. Remove fork tube pinch screw from right side of lower bracket.
3. Carefully cut off 4 in. of conduit covering the wires connected to right directional light.
4. Cut the directional light wires at the following lengths from the directional light:  
Blue wire- 1-1/4 in. from directional light  
Violet wire- 2-1/4 in. from directional light  
Black wire- 3-1/4 in. from directional light

#### NOTE

*The wires are cut at different lengths to stagger the butt connectors and prevent a large bulge in the harness.*

5. Strip 5/16 in. of insulation from the cut ends of the three wires cut in step 4.
6. Remove fork tube pinch screw from right side of upper fork bracket. (This is the screw that secures the right directional light.)
7. Install right directional light on right side of lower fork bracket using pinch screw removed in step 6. Install pinch screw removed in step 2 into right side of upper bracket. Tighten both pinch screws to 30-35 ft-lbs.
8. Repeat steps 1 through 7 to relocate left directional light.

#### NOTE

*Fork tubes may slide downward within fork brackets. If this occurs, front fork tube extension above front fork upper bracket will have to be readjusted according to appropriate Service Manual procedures.*

9. Connect right directional as follows: Crimp solderless connectors from kit on three wires coming from motorcycle.
10. Cut a 6 in. length of wire from the black, blue and violet wires in the kit.
11. Strip 5/16 in. of insulation from one end on each of the 6 in. wire lengths, connect like colored wires and crimp into connectors installed in step 9.
12. Slide shrink tubing from kit over crimped terminals. Activate shrink tubing with heat gun or hair dryer.
13. Cut 8 in. of 5/16 in. ID conduit from conduit supplied with kit.
14. Slide 8 in. length of conduit onto three wires connected in step 11 and over existing conduit.
15. Cut three spliced-on wires to the lengths required for connection to the wires connected to the directional light. Make certain to leave enough slack to allow routing harness along fork tube.

16. Slide heat shrink tubes over the three wire ends.
17. Strip 5/16 in. of insulation from remaining wire ends and connect like colored wires at directional light with connectors from kit.
18. Slide heat shrink tubing over connectors and activate shrink tubing with heat gun or hair dryer.
19. Slide 5/16 in conduit, installed in step 14, over all new connections and as close to directional light as possible.
20. Install a cable strap on the 5/16 in. conduit, next to directional light, to secure conduit in position.
21. Position harness along fork tube and secure with cable straps.
22. Repeat steps 9 through 21 to connect left directional light.
23. Continue at "INSTALLING WINDSHIELD".

#### INSTALLING WINDSHIELD

1. Install lower window in windshield by loosening the two (2) lower screws in each vertical windshield brace. Insert lower window under vertical braces, but, do not tighten screws now.
  2. See preceding illustration.
  3. Loosely install new windshield right mounting bracket (2) and a windshield mounting bracket clamp (3) from kit onto right front fork tube using two 5/16 - 18 x 3/4 in. hex flange bolts (7), two chrome washers (9) and two 5/16 - 18 locknuts (8) from kit.11. Position windshield right adjusting bracket (1) (part of windshield assembly) over outboard side of new windshield right mounting bracket (2).
4. Insert a shoulder bolt (5) through one Belleville washer (4) (with concave [cupped] side of washer facing away from bolt head), through slot of adjusting bracket (1), and slotted, upper hole in mounting bracket (2). Install another Belleville washer (4) (with concave [cupped] side of washer facing windshield right mounting bracket) and a locknut (6) over end of bolt. Do not final tighten at this time.
  5. Install the same fastener arrangement (as in the previous step) through slot of adjusting bracket (1) and around, lower hole of mounting bracket (2). Do not final tighten at this time.
  6. Adjust windshield to desired height. Verify that windshield is properly positioned (and not distorted) on motorcycle. Secure mounting bracket (2) and clamp (3) to front fork tube by tightening locknuts (8) to 12 ft-lbs.

#### **⚠WARNING**

**Before tightening shoulder bolts (5) and locknuts (6), verify that the outer Belleville washer (4), the adjusting bracket (1), the mounting bracket (2), and the inner Belleville washer (4) are positioned over the unthreaded, larger O.D. shaft section of each shoulder bolt (5); also verify that the mating surface (shoulder) of each shoulder bolt (5) contacts the mating surface of the attached locknut (6). If all fastener components are not properly positioned, the windshield could detach, startle rider, cause loss of control and personal injury.**

#### **⚠WARNING**

**Do not substitute any ordinary fasteners in place of the special shoulder bolts (5) and Belleville washers (4) included with this special kit. These bolts and washers are designed to maintain a specific clamping force in this windshield mounting application. Ordinary fasteners could allow windshield to detach, startle rider, cause loss of control and personal injury.**

7. Secure adjusting bracket (1) to mounting bracket (2) by tightening shoulder bolts (5) and locknuts (6) to 8 10 ft-lbs.
8. Repeat all the above steps for left side of vehicle.
9. Adjust lower window and tighten screws to 40 in-lbs.
10. If front signal lights were relocated, test operation of turn signals and running lights. If operation is not correct, verify that the wire splices were made properly.



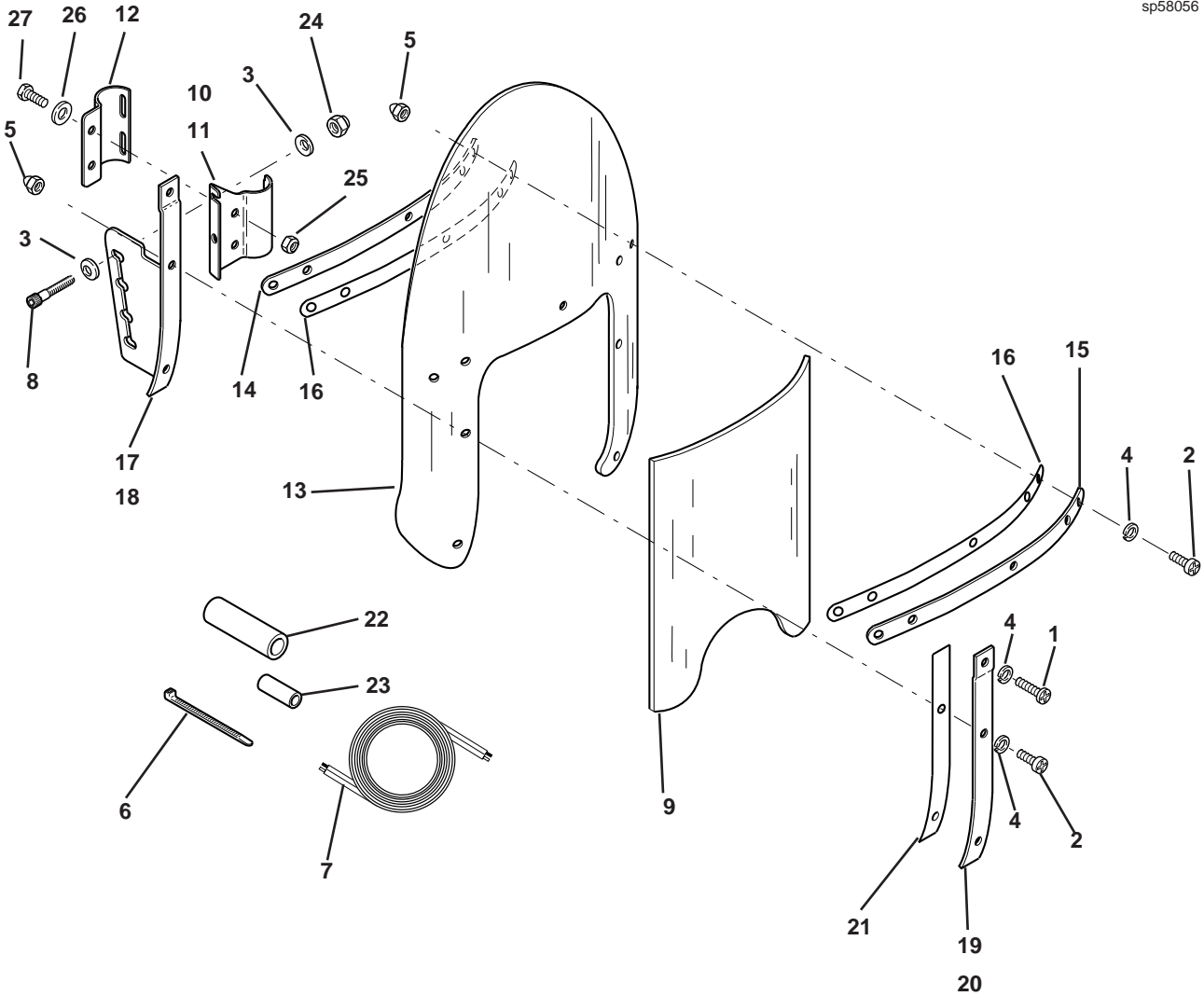
# Service Parts

Part No.58006-87B

Date 10/94

## Windshield Kit

sp58056



Item	Description	Part No.	Item	Description	Part No.
1	Screw,	2444	15	Brace, outer	58051-78A
2	Screw	2921	16	Tape, inner and outer brace	58052-78
3	Belleville Washer	6068	17	Adjustable bracket, left	58079-49
4	Washer	7073	18	Adjustable bracket, right	58078-49
5	Acorn nut	7651	19	Brace, right	58406-75A
6	Cable strap	10006	20	Brace, left	58408-75A
7	Wire assembly		21	Tape, right and left brace	58417-77
8	Shoulder bolt	52255-93	22	Heat shrink tubing	67113-83
9	Window, adjustable	58026-77	23	Connector, butt	70581-73
10	Bracket, right	58030-87A	24	Locknut	94026-92T
11	Bracket, left	58033-87A	25	Locknut	94028-92T
12	Clamp	58035-87A	26	Washer, chrome	94066-90T
13	Windshield		27	Screw	94192-91T
14	Brace, inner	58050-78A			