

SECURITY & STORAGE

Keep your pride and joy safe from dust, moisture, and common thieves. Harley-Davidson has engineered a complete line of garage storage accessories, heavy-duty locks, security systems and protective covers to protect and store your investment.





A. CRUISER CRADLE WHEEL CHOCK

A. CRUISER CRADLE WHEEL CHOCK

This sturdy aluminum wheel chock will hold your bike securely on the ground, on a trailer, or in the back of a pickup truck. Sized to fit most motorcycles, this wheel chock will keep your bike upright while you are storing, transporting or working on your bike. Designed for roll-on roll-off use, the rocking cradle allows one person to easily park their bike in the stand. Just roll the bike into place and dismount. The Cruiser Cradle holds the bike in place without straps. Upright storage saves garage space and permits easy access to both sides of the vehicle.

Cruiser Cradle's utility is not limited to the garage. The light-weight, folding wheel chock is easy to transport. Use it on the driveway when you are washing your bike, or, when equipped with the optional Trailer Adapter, the versatile wheel chock can be easily moved to a trailer or the back of a pickup truck. The one-person operation simplifies securing the bike for transport. Load the bike into the Cruiser Cradle, dismount, and the bike remains upright. Just two tie-down straps are required to hold the bike in place. And because you don't need to over-tighten the straps, you won't damage sensitive suspension parts and handlebar bushings.

92900001

For use with models with vehicle weight up to 3000 lbs (1360 kg) and front or rear wheel size of 14" to 22" (355-560mm) rim diameter and 3.15" to 8.66" (80mm-220mm) nominal wheel width.



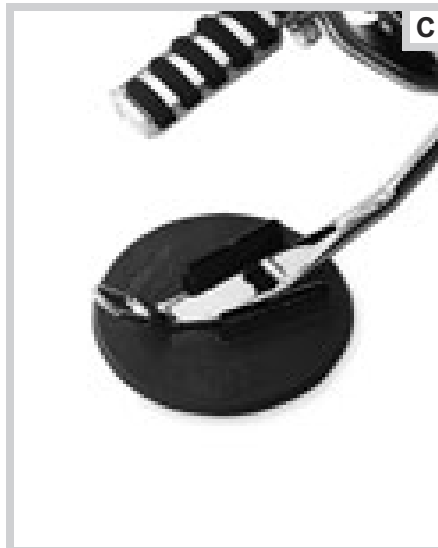
B. CRUISER CRADLE TRAILER ADAPTER KIT

B. CRUISER CRADLE TRAILER ADAPTER KIT

Cruiser Cradle Trailer Adapter Kit is engineered to simplify installation of Cruiser Cradle Wheel Chock on many trailers – from enclosed trailers to flat-bed style open versions. Simply mount the low profile kit to the floor of your trailer, and the Cruiser Cradle can be attached in seconds, without tools.

92900002

For use with Cruiser Cradle Wheel Chock P/N 92900001 on trailer applications.



C. JIFFY STAND COASTER

C. JIFFY STAND COASTER

Designed for use beneath the jiffy stand, this polypropylene coaster prevents the stand from sinking into soft surfaces such as dirt, asphalt and grass.

94647-98

Fits motorcycles equipped with a sidestand.

D. MOTORCYCLE SERVICE LIFT

This lift raises and lowers motorcycles by a hand crank, allowing you to elevate the motorcycle up to 19" off the ground. A friction disc helps hold the lift in place and wheels make it easy to roll into storage. Minimum clearance for lift is 4-1/2 inches. Tie-downs must be used with Lift. Recommend using Hog Ties® P/N 94649-98 and/or Hog Ties with Integrated Soft Hooks P/N 94672-99. Frame Protectors P/N 94675-99 also recommended.

94653-98

Fits all Harley-Davidson® V-Twin models (except Trike and models equipped with a Sidecar). Twin Cam-equipped Dyna® models require Adapter Kit P/N 98965-99 for proper fitment.

Also available:

FRAME PROTECTORS

Use these Frame Protectors to protect the underside of your motorcycle when using any lift. A must for Softail® models to provide the clearance necessary to keep lift pressure on the frame and not the shock absorbers. Universal and customizable to fit any V-Twin Harley-Davidson motorcycle.

94675-99 Fits all 1-1/4" frame tubes. (pair)

TWIN CAM-EQUIPPED DYNA® MODEL MOTORCYCLE SERVICE LIFT ADAPTER KIT (not shown)

Provides the necessary clearance of the oil tank that allows the Motorcycle Service Lift P/N 94653-98 to be used on '99-later Dyna models equipped with a Twin Cam engine.

98965-99

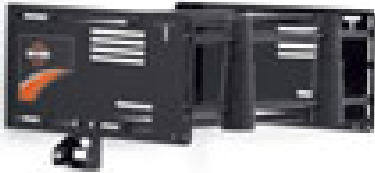


D. MOTORCYCLE SERVICE LIFT

VERSATILE STORAGE

The Detach Depot Garage Storage System provides versatile, secure, off-the-floor storage for detachable accessories — saving valuable shelf and floor space. The convenient Detach Depot Wall Rack and Saddlebag Mounts put Detachables within easy reach, and protect your components from storage wear and tear.

DETACH DEPOT EXAMPLE CONFIGURATIONS



WALL RACK

The Detach Depot Wall Rack can be adjusted to accommodate a wide variety of detachable accessories. Just mount the rack to the wall studs, move the soft-touch rods into position, and mount your accessories. The versatile storage rack has the flexibility to grow with you as you change bikes or add more accessories.



SPORTSTER® DETACHABLES



DYNA® DETACHABLES



SOFTAIL® DETACHABLES



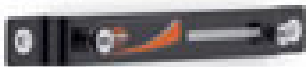
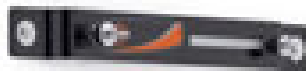
SOFTAIL DELUXE DETACHABLES



ROAD KING® CLASSIC DETACHABLES



TOURING DETACHABLES



SADDLEBAG MOUNTS

The Detach Depot Saddlebag Mounts securely position your Sportster®, Dyna® or Softail® detachable saddlebags off the floor and out of the way. Just bolt the brackets to the wall studs, adjust the docking points, and utilize the saddlebag's built-in hardware to lock the bags in place.



SPORTSTER DETACHABLE SADDLEBAGS

DYNA DETACHABLE SADDLEBAGS

FAT BOY® DETACHABLE SADDLEBAGS





A. DETACH DEPOT WALL RACK

A. DETACH DEPOT WALL RACK

Declutter your garage! Detachable windshields, backrests, luggage racks, and Tour-Pak® luggage increase the versatility of your bike, and allow you to equip your motorcycle for today's ride. Add the accessories to the bike when you need them, and pop them off when you don't. But what do you do with the Detachables when they are not on the bike? The Detach Depot Wall Rack offers an off-the-floor, secure storage place for your detachable accessories. You no longer need to find acres of shelf space or worry about tripping over your detachable components. This heavy-duty Detach Depot Wall Rack can be mounted to any wall, and the 16" on-center design lets you mount it securely to the studs. The rack features 5 coated rods that can be positioned in a wide variety of adjustable mounting slots. Just install the rods in the appropriate location, tighten them down, and click your detachable accessories in place. Adjustable rods can accommodate almost any combination of accessories. Kit includes black-finished side panels, 5 coated rods, decorative end caps, and all necessary mounting hardware.

93100005

For use with H-D® Genuine Motor Accessory Detachable products including Tour-Pak mounting racks, Sissy Bars, Luggage Racks, Rider Backrests and Detachable-style Windshields. Quick-Release style Detachable Windshields and Rider Backrests require separate purchase of auxiliary mount kits.



B. DETACH DEPOT QUICK-RELEASE WINDSHIELD MOUNTS

B. DETACH DEPOT QUICK-RELEASE WINDSHIELD MOUNTS

Required for installation of Quick-Release Detachable Windshields on Detach Depot Wall Rack. Stepped conical mounts slip onto the Detach Depot Wall Rack's adjustable rods, and allow the clamp-style quick-release windshield mounts to firmly lock in place. Kit includes 2 stepped mounts.

93100015

For use with Harley-Davidson® Quick-Release Windshields and Detach Depot Wall Rack P/N 93100005.



C. DETACH DEPOT RIDER BACKREST MOUNT

C. DETACH DEPOT RIDER BACKREST MOUNT

Store your Touring Rider Backrest safely in your garage when it's not on your bike. This compact bracket mounts to the Detach Depot Wall Rack side plate, and allows you to hang the rider backrest pad in a convenient location. Kit includes mounting bracket and required hardware.

93100016

For use with Harley-Davidson Touring model Rider Backrest and Adjustable Rider Backrest Kits and Detach Depot Wall Rack P/N 93100005.



D. DETACH DEPOT FOR SADDLEBAGS

D. DETACH DEPOT FOR SADDLEBAGS

Detachable saddlebags offer a versatile option to outfit your Sportster®, Dyna® or Softail® model as a cross-country tourer. But what do you do with the bags when you want to dress your bike down for a night on the town? The Detach Depot for Saddlebags offers a secure, off-the-floor storage solution. Don't worry about tripping over or damaging your Detachable Leather Saddlebags when they are not on your bike. These heavy-duty brackets can be easily attached to any wall in your garage, and feature adjustable docking points that function just like the mounting points on your motorcycle. Just position the saddlebag on the mount, and lock the bag in place. Designed with 16" on-center mounting holes, the brackets can be attached directly to the wall studs, and can be positioned for convenient storage height. Kit includes brackets, docking points, and mounting hardware.

93100002

For use with Sportster, Dyna and Softail Genuine Motor Accessory Detachable Saddlebags.

752 SECURITY & STORAGE

Motorcycle Covers

A. MOTORCYCLE SUPER SHIELD COVERS

This premium, heavy-duty motorcycle cover is constructed of a resilient 2-layer fabric. The outside layer is durable, fade resistant, urethane-coated polyester that resists water, dirt and stains. Internal layer is a sturdy, yet soft tricot material, providing a paint-friendly, soft-to-the-touch finish. Double stitched and heat sealed, taped seams provide strength and superior water resistance. Venting system allows for breathability and accommodates longer-term storage. Additional features include heat resistant exhaust panels, elastic edges, securing strap/grommets, and a deluxe storage bag. The covers are accented with a silver Harley-Davidson® Bar & Shield logo. Touring version comes with hook-and-loop secured openings to accommodate dual antennas.

98744-09

Fits VRSC™, FLD, FXDWG and Softail® models.

98743-09

Fits Touring models (except Trike).



A. MOTORCYCLE SUPER SHIELD COVER



B. PREMIUM COTTON INDOOR STORAGE COVER

B. PREMIUM COTTON INDOOR STORAGE COVERS

We take these indoor covers one step further. Additional processing provides a softer nap to the heavyweight 8-oz. cotton. The premium cotton material is breathable, allowing moisture to escape when your bike is in storage. Accented with an embroidered Bar & Shield logo, this cover features elastic edges and includes a convenient storage bag.

91687-98

Fits Sportster® and Dyna® models (except FLD and FXDWG).

91686-98

Fits VRSC, FLD, FXDWG and Softail models.

91685-98

Fits Touring models (except Trike).

84036-11

Fits Trike models.



C. INDOOR/OUTDOOR MOTORCYCLE COVER WITH EAGLE LOGO – TOURING



C. INDOOR/OUTDOOR MOTORCYCLE COVER WITHOUT EAGLE LOGO

C. INDOOR/OUTDOOR MOTORCYCLE COVERS

Our most versatile covers, these all-weather, indoor/outdoor covers are made of a tough, lightweight 300 denier, fade resistant polyester. The urethane-coated material and double stitched seams, provide excellent strength and water resistance. Venting system allows for breathability and accommodates longer-term storage. Exhaust heat shield panel(s) protect the covers from hot exhaust systems. Additional features include a protective windshield liner (for Softail/VRSC and Touring versions), securing strap, elastic edges, and a convenient storage pouch. Touring versions come with hook-and-loop secured openings to accommodate dual antennas.

Indoor/Outdoor Motorcycle Covers without Eagle Logo

98721-90B

Fits Sportster and Dyna models (except FLD and FXDWG).

98722-90C

Fits Touring models (except Trike).

Indoor/Outdoor Motorcycle Covers with Eagle Logo

98705-85VB

Fits Sportster and Dyna models (except FLD and FXDWG).

98724-92C

Fits VRSC, FLD, FXDWG and Softail models.

98715-85VC

Fits Touring models (except Trike).

83845-09

Fits Trike models.



C. INDOOR/OUTDOOR MOTORCYCLE COVER WITH EAGLE LOGO – TRIKE



D. SIDECAR COVER WITH EAGLE LOGO



WARNING: Do not use with someone riding inside. Doing so could result in death or serious injury.

NOTE: H-D® motorcycle covers are not designed to be used while trailering. Using an H-D motorcycle cover while trailering may cause the cover to tear, possibly causing damage to the cover and motorcycle.



E

E. BREATHABLE INDOOR STORAGE COVER



F

F. HARLEY BUBBLE

E. BREATHABLE INDOOR STORAGE COVER

Constructed from soft, non-abrasive polyester that is breathable, allowing condensation to escape when your bike is in storage (not waterproof). Features elastic edges, silk-screened Eagle logo, and includes a convenient storage pouch. A great choice when storing your motorcycle indoors for extended periods of time.

98716-87B Fits all models (except Trike).

F. HARLEY® BUBBLE

The Harley® Bubble is designed to constantly flow filtered air over the bike, providing a dust-free, condensation-free environment that greatly decreases the chances of corrosion during storage. The bike stays clean, dry, and best of all, can be viewed even while it's being stored. For indoor and North American use only. 110-volt only.

94646-98
Fits models with Windshields and Tour-Pak® Luggage Carriers. Does not fit Trike or models equipped with a sidecar.

94662-98
Fits Sport and Cruising models.

Replacement Air Intake Filter for Harley Bubble

94688-00
Fits both Touring and Sport Harley Bubbles.



G

G. COTTON WINDSHIELD STORAGE BAG



H

H. SOFT STORAGE BAG FOR FAIRING LOWERS

G. COTTON WINDSHIELD STORAGE BAG

This bag is constructed of breathable cotton material and is designed for a scratch-free storage area. The outside of the bag features an embroidered Bar & Shield logo to match the cotton cycle covers.

95982-98B
Fits all Harley-Davidson® windshields.

H. SOFT STORAGE BAG FOR FAIRING LOWERS

Protect your fairing lowers when they are removed for hot weather riding. This convenient storage bag features a heavy-weight 10-oz. cotton exterior and sturdy carrying handle. Dual zippers open to expose a soft felt interior with a sturdy divider for left and right lowers, and two zippered pouches for loose hardware storage. A classic embroidered Bar & Shield logo adorns the bag's exterior.

95983-07
Fits all Harley-Davidson Fairing Lower.

I. OASIS DAY COVER

Protect your bike from the elements when you are out on the road. Lightweight and compact for travel, this easy-to-store cover rolls into the built-in zippered bag. Made from soft, 150-weight polyester, this black and orange water repellent fabric dries quickly for a quick get away. Custom fit cover features an elastic band around the bottom hem, and the four footboard stirrups ensure a snug fit. The "Harley-Davidson" script and Bar & Shield logo prominently stand out on the fabric.

98717-06
Fits Touring models (except Road Glide®) equipped with Tour-Pak luggage.



I

I. OASIS DAY COVER

NOTE: H-D® motorcycle covers are not designed to be used while trailering. Using an H-D motorcycle cover while trailering may cause the cover to tear, possibly causing damage to the cover and motorcycle.

754 MAINTENANCE

Motorcycle Tie-Downs

A. HOG TIES® STRAPS

Made and designed specifically for Harley-Davidson® motorcycles, these are among the sturdiest tie-downs on the market. Each tie-down is a full 1-1/2 inches wide for unbelievable holding strength, with sturdy buckles that feature the Harley-Davidson Bar & Shield logo. At least 50% wider and 50% stronger than a standard tie-down. Don't trust your Harley-Davidson motorcycle to anything less.

94649-98 Fits all models. (pair)

Shown with:

HOG TIES STRAPS WITH INTEGRATED SOFT HOOKS

This version of the popular Hog Ties tie-down has integrated Soft Hooks along with the standard coated steel hooks, allowing you a choice of either the soft or steel hook against the motorcycle. It is especially useful for avoiding pinching of brake lines, wiring or other parts that can be damaged by steel hooks. Features sturdy buckles with cast Harley-Davidson Bar & Shield logo.

94672-99 Fits all models. (pair)



A. HOG TIES STRAPS

B. 1-1/2" GRADUAL RELEASE RATCHET TIE-DOWN STRAPS

These 1-1/2" Ratchet Tie-Down Straps provide a heavy-duty 1,800 lb capacity for maximum tensioning power. The ratchet features a comfortable handle and a dual-direction reversing drive that permits gradual tension release. Just throw the lever and back off the tension a little at a time, reducing the "snap back" from most ratchet release designs. Straps feature integrated soft hooks, vinyl-coated "S" hook on one end and a closed end carabiner hook that won't come unhooked during the tie-down process.

94706-10

Ratchet Straps with Integrated Soft Hook.



B. 1-1/2" GRADUAL RELEASE RATCHET TIE-DOWN STRAPS

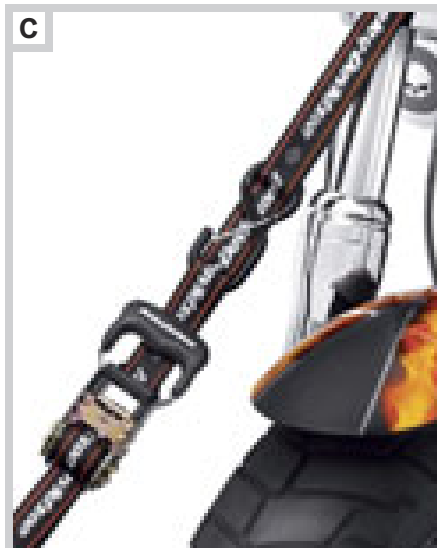
C. HARLEY-DAVIDSON® 1-1/4" RATCHET TIE-DOWN STRAPS

These 1-1/4" Harley-Davidson Tie-Downs have a 1,200 lb capacity and feature Harley-Davidson scripted webbing with a loop handle for easy pulling. Vinyl-coated hooks feature spring loaded one-way wire loop gates that hold the hook in position, simplifying initial tie-down setup. Harley-Davidson Ratchet Tie-Down Straps feature lever-action ratchets for use when greater tensioning power is needed. Straps are also available with integrated soft hooks that are designed to keep the coated hard hooks away from delicate surfaces. Sold in pairs.

1. 94699-10 Ratchet Straps.

2. 94704-10

Ratchet Straps with Integrated Soft Hook.



C. HARLEY-DAVIDSON 1-1/4" TIE-DOWN STRAPS – RATCHET



D. ANCRA RAT-PACK RATCHET STYLE TIE-DOWNS



E. ANCRA TIE-DOWNS

D. ANCRA® RAT-PACK RATCHET STYLE TIE-DOWNS

The Ancra® ratcheting buckle allows you to quickly and easily secure your load.

98187-90T (pair)

E. ANCRA TIE-DOWNS

Features the Ancra cam-buckle that protects the webbing while providing a secure non-slip grip. This 66-inch long motorcycle tie-down is rated at 1,200 lbs. straight pull and 2,400 lbs. looped tension.

98186-84T Black. (pair)

98183-90T Orange. (pair)

F. FLEECE SOFT HOOKS

These 18" Soft Hooks are designed to keep ratchets, hooks and buckles away from delicate surfaces. The soft synthetic sheepskin cover cushions the surface and protects handlebars, triple trees and other tie-down points from scratches and abrasion. Each soft hook has a capacity of 2,400 lbs.

93100017 Fits all models. (pair)

G. HARLEY-DAVIDSON® 18" SOFT HOOKS

These Harley-Davidson® 18" Soft Hooks keep ratchets and buckles away from delicate surfaces. Each soft hook has a capacity of 2,400 lbs.

94705-10 Fits all models. (pair)

H. HOG TIES® SOFT HOOKS

New, wider Soft Hooks to be used in conjunction with the super strong Hog Ties Straps. These Soft Hooks prevent scratching of handlebars, fairings, etc. and have a whopping 5,700 lbs. of tensile strength.

94650-98 Fits all models. (pair)

I. ANCRA SOFT HOOK EXTENSIONS

Black Soft Hook acts as a tie-down extension, keeps hooks away from delicate surfaces, and is available in two loop lengths, 12 inches and 18 inches. Each Soft Hook has an assembly strength of 3,000 lbs.

98192-85T 12 inches. (pair)

98193-85T 18 inches. (pair)



F. FLEECE SOFT HOOKS



G. HARLEY-DAVIDSON 18" SOFT HOOKS



H. HOG TIES SOFT HOOKS



I. ANCRA SOFT HOOK EXTENSIONS

756 SECURITY & STORAGE

Locks & Keys

A. DISC BRAKE LOCK AND REMINDER CORD^{1*}

Designed to prevent roll-away theft, this lock provides security protection and resists cutting and chisel attacks. Hardened drop-forged steel lock features a dual-reinforced high-security disc-style cylinder and blade-style key. The sleek and compact design is available in mirror-chrome or in a bright orange finish for maximum visibility. Kit includes 2 blade-style keys and a high-visibility reminder cord that loops from the lock to the handlebar as a visual indication that your lock is still engaged. Key registration and replacement service is available.

Fits front brake rotor on '83-later models, except those with 19-inch laced front wheels. On VRSC™ models, fits on rear brake rotor, does not fit front brake rotor on models equipped with solid disc wheels.

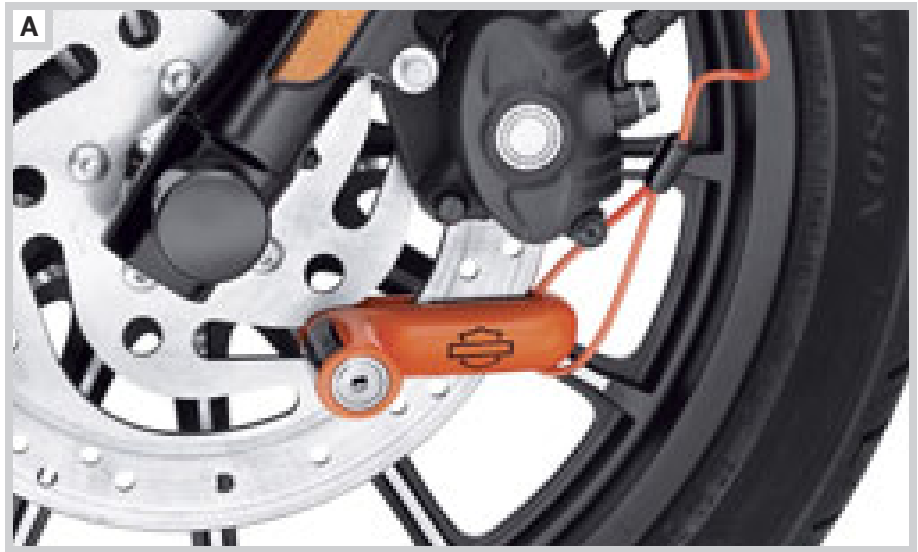
46086-98A Chrome.
94873-10 Orange.

Also available:

LOCK REMINDER CORD¹

Remember to remove your Disc or Fork Lock before beginning your ride with this high-visibility Reminder Cord. Flexible, coiled, bright orange cord loops from external lock to handlebar, acting as a visual indication that your lock is still engaged.

46318-04 Universal.

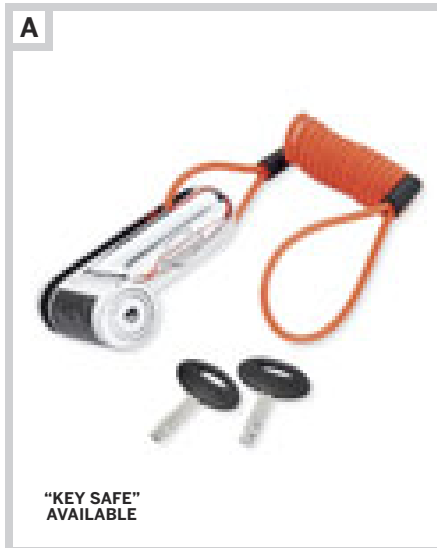


A. DISC BRAKE LOCK AND REMINDER CORD – ORANGE

B. H-D® 12MM ACCESSORY CABLE LOCK^{1,2*}

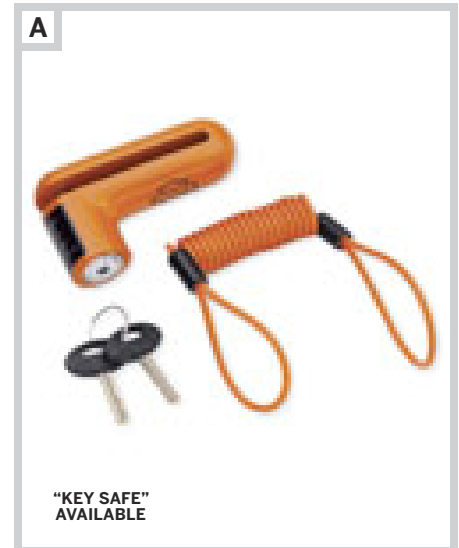
This 12mm multi-purpose cable lock is ideal for securing helmets, leathers and other items. The braided steel cable features a protective vinyl cover and a soft molded lock cover to prevent scratches. The integrated lock features a snap-shut keyway for weather protection, and the flexible cable can be coiled tightly for convenient storage. Orange highlights improve visibility for added theft deterrence. Kit includes 2 blade-style keys. "Key Safe" registration and replacement service is available. Cable length: 6.0'.

46090-98A



"KEY SAFE"
AVAILABLE

A. DISC BRAKE LOCK AND REMINDER CORD – CHROME



"KEY SAFE"
AVAILABLE

A. DISC BRAKE LOCK AND REMINDER CORD – ORANGE

C. H-D 20MM SUPER HARD WIRE CABLE LOCK^{1,2*}

This tempered steel cable lock features a smooth vinyl cover and a soft molded lock head to protect the frame and wheel from scratches. The braided and twisted cable offers improved cut resistance, and the integrated lock features a snap-shut cylinder with quarter-turn key movement. Orange highlights improve visibility for added theft deterrence. Kit includes 2 blade-style keys. "Key Safe" registration and replacement service is available. Cable length: 6.0'.

46089-98A



"KEY SAFE"
AVAILABLE

B. H-D 12MM ACCESSORY CABLE LOCK



"KEY SAFE"
AVAILABLE

C. H-D 20MM SUPER HARD WIRE CABLE LOCK



¹**WARNING:** Remove lock before operating motorcycle. Failure to remove lock could result in death or serious injury.



²**WARNING:** Chain or cable is to be used as a theft deterrent only. Use for towing, lifting, or any other purpose could result in death or serious injury.

**"KEY SAFE" registration and replacement service is provided by the lock manufacturer. Information is included in the product packaging.



D

D. SHACKLE LOCK WITH POUCH AND CORD

"KEY SAFE" AVAILABLE

D. SHACKLE LOCK KIT^{1*}

Secure your brake disc or sprocket. This lock features a fully removable 14mm shackle with a large inside diameter to simplify the capture of chain links and cable loops. The high-security double deadbolt design and anti-float disc lock cylinder is tough to defeat, and the soft nylon coating on the shackle and lock protects your bike's finish. The blade-style key slot is hidden behind a sliding dust cover for weather protection, and the kit includes a lighted key for nighttime locking. The bright orange color of the lock and the handy reminder cord provides visibility to the user and added theft deterrence. When not in use, the lock and cord can be stored in the compact ballistic nylon pouch with belt clip. Kit includes lock, two standard keys, one lighted key, coiled reminder cord, and storage pouch. This lock includes the "Key Safe" program that allows you to re-order keys if you lose them, and offers optional Anti-Theft Protection that will pay you up to \$750 if your bike is stolen.

94868-10



E

E. SECURITY CHAIN AND SHACKLE LOCK

"KEY SAFE" AVAILABLE



F

F. NOOSE CHAIN AND SHACKLE LOCK KIT

"KEY SAFE" AVAILABLE

E. SECURITY CHAIN AND SHACKLE LOCK^{1,2*}

This high-security Chain and Lock features a 12mm triple heat treated boron manganese 6-sided link steel chain, surrounded with an exclusive Bar & Shield logo nylon webbing to provide protection against scratched finishes. The lock features a fully removable 14mm shackle, a double deadbolt design for added security, a high-security lock cylinder with anti-float discs and nylon molded dust cover, and a lighted key for nighttime locking. The orange color gives the lock greater visibility for added theft deterrence. This lock includes the "Key Safe" program that allows you to re-order keys if you lose them, and offers optional Anti-Theft Protection that will pay you up to \$1,000 if your bike is stolen. Security chain length: 5.0'.

94872-10

F. NOOSE CHAIN AND SHACKLE LOCK KIT^{1,2*}

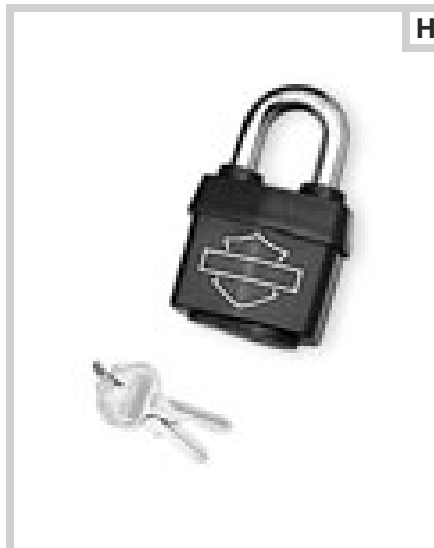
Maximum protection for your motorcycle. This high-security Noose Chain and Lock features a 12mm triple heat treated boron manganese 6-sided link steel chain with cinch ring for securing your bike to stationary objects. Put the chain around a post, slip the chain through the ring, and cinch it tight. Then loop the nylon-web covered chain through the frame or wheels of the bike and lock it up tight. The lock features a fully removable 14mm shackle, a double deadbolt design for added security, a high-security lock cylinder with anti-float discs and nylon molded dust cover, and a lighted key for nighttime locking. The orange color gives the lock greater visibility for added theft deterrence. This lock includes the "Key Safe" program that allows you to re-order keys if you lose them, and offers optional Anti-Theft Protection that will pay you up to \$1,000 if your bike is stolen. Security chain length: 4.25'.

94869-10



G

G. DOUBLE LOOPED SECURITY CABLE



H

H. HIGH SECURITY PADLOCK

G. DOUBLE LOOPED SECURITY CABLE²

This handy 7' x 10mm Double Looped Cable is very versatile. The vinyl covered braided cable is flexible, and can be used to lock equipment to your bike. Loop it through the sleeve of your jacket and the strap of your helmet, lock it to the bike, and feel free to walk away unencumbered. The bright orange swage covers provide greater visibility for added theft deterrence, and the hook-and-loop strap lets you tie the coiled cable for convenient storage. Cable length: 7.0'.

94871-10

H. HIGH SECURITY PADLOCK¹

Premium quality, commercial grade padlock features a tough, hardened boron alloy shackle and dual ball bearing locking mechanism. Steel lock body is enclosed in high-tech black Xenoy®, offering exceptional weather resistance.

45721-96A



¹ **WARNING:** Remove lock before operating motorcycle. Failure to remove lock could result in death or serious injury.



² **WARNING:** Chain or cable is to be used as a theft deterrent only. Use for towing, lifting, or any other purpose could result in death or serious injury.

758 SECURITY & STORAGE

Locks & Keys

A. BAR & SHIELD PADLOCK

Classic round-body lock is perfect for use as a fork lock, or to secure protective cables or chains. This high-security lock features a tough case-hardened boron alloy shackle and easy-to-operate quarter-turn five-pin tumbler cylinder, housed in a beautiful chrome-plated lock body with textured surfaces and embossed Bar & Shield logo. Kit includes 2 keys.

45737-72A

B. UNIVERSAL MOUNT HELMET LOCK¹

Designed to be installed on any 7/8" to 1-1/4" diameter tubing such as engine guards, saddlebag guards, and frame tubes. Conveniently secures helmets. To be used only when motorcycle is parked and locked.

45732-86

Fits all models (except VRSC™ and '04-later XL and XR models).

C. LOCKING QUICK-RELEASE WINDSHIELD CLAMP

Protect your investment. This Locking Quick-Release Windshield Clamp secures your windshield from grab-and-run theft, giving you peace of mind when you have to leave your bike unattended. The chrome-plated Locking Clamp replaces one of the Original Equipment windshield clamps, and features a push-button lock with a mini barrel-style key for easy removal. Kit includes one locking clamp and two matching keys.

57400006 39mm.

Fits '88-later XL and '91-'05 Dyna® models (except FXDWG) equipped with Quick-Release-style detachable windshields.

57400007 41mm.

Fits '93-'05 FXDWG and '88-later FXS, FXST, FXSTB and FXSTC models equipped with Quick-Release-style detachable windshields.

57400008 49mm.

Fits '02-later VRSC models (except VRSCF) and '06-later Dyna models equipped with Quick-Release-style detachable windshields.

D. UNIVERSAL SADDLEBAG LOCK KIT

Keep the contents of your existing soft-sided saddlebags safe from the grab-and-go thief. This unique kit features two extra small barrel locks that can replace existing saddlebag snaps to perform double duty as locks or as snaps when you don't need to lock your bags. Can be keyed to match your barrel style ignition key. Sold in pairs.

Fits most soft-sided leather and vinyl saddlebags.

90300003 Keyed To Match.

90300017 Random Key Code.

E. DETACHABLES LOCK[®]

This unique lock replaces the cam-lock on your Harley-Davidson® Detachable accessories, providing additional security and peace-of-mind when parking your vehicle. Kit includes two extended-reach barrel-style keys for easy access to the lock. Designed exclusively by Harley-Davidson. Key registration and replacement service is available.

Fits all models equipped with Detachable Sideplates, Racks and Tour-Pak® Luggage Carriers (except '09-later Touring models equipped with Detachable Solo Tour-Pak Rack).

46063-98 Single.



A. BAR & SHIELD PADLOCK



B. UNIVERSAL MOUNT HELMET LOCK



C. LOCKING QUICK-RELEASE WINDSHIELD CLAMP



D. UNIVERSAL SADDLEBAG LOCK KIT



"KEY SAFE"
AVAILABLE



"KEY SAFE"
AVAILABLE

E. DETACHABLES LOCK



WARNING: Remove lock before operating motorcycle. Failure to remove lock could result in death or serious injury.

**"KEY SAFE" registration and replacement service is provided by the lock manufacturer. Information is included in the product packaging.



F. KEYED-TO-MATCH CUSTOM KEYS

F. KEYED-TO-MATCH CUSTOM KEYS

1. Commemorative CVO™ Ignition Key

Celebrate the exclusive nature of your Harley-Davidson® CVO™ (Custom Vehicle Operations™) motorcycle with this commemorative ignition key. Keyed to match your ignition and fork lock, this hand-polished brass key features a prismatic Bar & Shield logo set in a black field surrounded by "Custom Vehicle Operations" script. Available to CVO vehicle owners only, the key is made-to-order and delivered in a leatherette gift box. See your Dealer for ordering information.

71031-04

Available to CVO motorcycle owners only.

2. Skull Ignition Keys

Keyed to match your ignition and fork lock, this key features the Harley-Davidson Skull logo in bright nickel with black accents. Key is delivered in a leatherette gift box. Keys can be ordered through your Harley-Davidson Dealer and will be keyed to match your bike.

71040-04 Barrel Style.

Fits '91-later models with barrel style key.

71041-04 Blade Style.

Fits '94-later XL models with blade style key.

3. Bar & Shield Logo Ignition Keys

Keyed-to-match your ignition and fork lock, this key features the Harley-Davidson Bar & Shield logo with an antique brass finish. In time and with use the key will continue to develop a patina and character. Key is delivered in a leatherette gift box. Keys can be ordered through your Harley-Davidson Dealer and will be keyed to match your bike.

71038-04 Barrel Style.

Fits '91-later models with barrel style key.

71039-04 Blade Style.

Fits '94-later XL models with blade style key.



G. HARLEY-DAVIDSON SECURITY SYSTEM PAGER RECEIVER II – BATTERY POWERED

G. HARLEY-DAVIDSON® SECURITY SYSTEM PAGER RECEIVER II

Designed to complement the Smart Siren II, this Pager Receiver can be linked to the vehicle with no additional installation. The Pager Receiver II monitors the Security System operation, and features multi-color LED indicators to display unique codes for arming, disarming and trigger modes. The Range Confirmation Signal (RCS) confirms and displays the signal reception. High-efficiency FM circuitry provides excellent reception, even in buildings and parking garages. Maximum effective range is up to 1/2 mile. The Pager Receiver II features selectable vibration or audible modes. The silent paging mode feature allows selectable programming trigger modes to avoid activating the siren.

Pager Receiver II – Battery Powered

The convenient built-in ultra-bright white LED flashlight helps light the way. The compact, lightweight receiver can be carried in your pocket, or the receiver holster can be clipped to a belt up to 1-3/4 inches wide. Kit includes receiver, holster, and one 3V lithium battery. Operates in conjunction with the Security System Fob and Smart Siren II.

91660-06

Fits all models equipped with the Harley-Davidson Security System Smart Siren II. Certified for use in North America.

66378-06

CR2450 3v Lithium Replacement Battery.

Pager Receiver II – Rechargeable

The compact, lightweight receiver can be carried in your pocket or clipped to a belt. Kit includes receiver and UL-listed battery charger (AC-DC with Output of DC 4.5V 50mA for North America). Operates in conjunction with the Security System Fob and Smart Siren II.

91672-07

Fits all models equipped with the Harley-Davidson Security System Smart Siren II. Certified for use in North America.



G. HARLEY-DAVIDSON SECURITY SYSTEM PAGER RECEIVER II – RECHARGEABLE

760 SECURITY & STORAGE

Security Systems

A. H-D® SMART SECURITY SYSTEM – '07-LATER MODELS

The H-D® Smart Security System offers automatic self-arming and hands-free disarming for vehicle electronic security functions for your '07-later Harley® motorcycle. The Hands-Free Fob communicates directly on its own unique and individualized frequency with the Hands-Free Security Module and Antenna. Attach the Hands-Free Fob to your vehicle ignition key ring. As you upright your vehicle or switch the ignition on, the Hands-Free Fob will communicate the Security System "disarm" command allowing you to start your vehicle. After riding your vehicle, park and switch the ignition off with your key. Within 5 seconds the Security System will automatically self-arm, disabling your vehicle starter, ignition and electronic fuel injection (EFI). The rider may also disarm the system by keying a previously entered personal code on the turn signal switches. A flashing status indicator informs the rider that the Smart Security System is armed or disarmed. The Smart Security System allows configuration to include the Transport Mode or Extended Storage Mode. The Smart Security System includes: Hands-Free Security Module (Integrated Security Sensor and Turn Signal Module or Body Control Module), Hands-Free Fob, Antenna Module, Antenna Harness and Antenna Mount (Dyna® models).

Also available:

H-D SMART SECURITY SYSTEM HANDS-FREE FOB

Replacement/Additional Hands-Free Fob.

68926-07

Fits '07-later models equipped with H-D Smart Security System.

66373-06

CR2032 3v Lithium Replacement Battery.

B. H-D FACTORY SECURITY SYSTEM – '06-EARLIER MODELS

Equip your '06-earlier Harley-Davidson® VRSC™, Sportster®, Dyna, Softail® or Touring model with the security system designed and approved by The Harley-Davidson Motor Company.

When armed, the Security System disables the starter and ignition while monitoring the electrical system and vehicle motion with adjustable sensitivity. Minor disturbances trigger a momentary warning; major ones, an unbroken thirty-second alarm, after which the Security System returns to monitoring. A distinctive four-way flasher pattern is the alarm signal. An optional self-powered Smart Siren Kit adds a piercing scream that sounds even if the battery cable is cut.

The Security System is armed and disarmed with a remote control waterproof key fob utilizing state-of-the-art rolling code technology. If the key fob is not available, the rider may arm or disarm the system by keying a previously entered personal code on the turn signal switches. A flashing status indicator informs the rider that the Security System is armed or disarmed.

When armed in the Transport Mode, the Security System disables the starter and ignition, but monitors only the electrical system, not vehicle motion. The vehicle may be moved but electrical tampering triggers an alarm.

An Extended Storage Mode keeps the battery from discharging when the Security System is armed for extended periods of time.

The Security System is compatible with FL Touring models equipped with approved TLE/Ultra Sidecars when the system is configured as described in the Sidecar owner's manual.

H-D Factory Security System Includes:

- Security Module (Integrated Security Sensor, and Turn Signal Module).
- Remote Control Waterproof Key Fob.
- Pocket-Sized Operation Manual.

Also available:

REPLACEMENT/ADDITIONAL REMOTE CONTROL WATERPROOF KEY FOB

68926-00

Fits models equipped with H-D Factory Security System, North America.

68927-00

Fits models equipped with H-D Factory Security System, International (except Japan).

66373-06

CR2032 3v Lithium Replacement Battery.



A. H-D SMART SECURITY SYSTEM – '07-LATER MODELS



A. H-D SMART SECURITY SYSTEM – '07-LATER MODELS



B. H-D FACTORY SECURITY SYSTEM – '06-EARLIER MODELS

C



C. H-D SECURITY SYSTEM SMART SIREN II

C. H-D® SECURITY SYSTEM SMART SIREN II

Security and convenience in one. The Harley-Davidson® Smart Siren II combines the functionality of the smart siren and pager transmitter into one easy-to-install unit. Featuring a built in back-up power supply, the siren and transmitter functions will continue to operate even if the wires are cut or the vehicle battery is disconnected. When combined with the Pager Receiver II (sold separately), the integrated FM transmitter can warn of tampering up to 1/2 mile away. Smart Siren II features an enhanced sound chamber, a redesigned internal battery access cover, and ultra low power consumption during the standby mode. When activated, the Security System Fob arm and disarm commands are confirmed with a blink feature and '07-later models can be programmed to emit a chirp. Smart Siren II is certified for use in North America.

SMART SIREN BATTERY REPLACEMENT KIT (not shown)

Replacement Battery Kit for Harley-Davidson Factory Security System Smart Siren includes replacement nickel metal hydride battery and instructions.

69309-10

H-D SECURITY SYSTEMS, NORTH AMERICA

Model Year	Model Family	Security System	Smart Siren II Kit**
2007-2012	VRSC™ (except VRSCF)	68207-07A	68328-06A
2009-2012	VRSCF	91684-08A	68328-06A
2002-2006	VRSC (except VRSCR)	68200-00D	68328-06A
2006	VRSCR	68207-00D	68328-06A
2008-2012	Trike	68200-07A	68328-06A
2007-2012	FL Touring	68200-07A*	68328-06A
2002-2006	FL Touring	68200-00D*	68328-06A
2000-2001	FL Touring	68200-00D*	68317-06A
2012	Dyna®	41000087	68328-06A
2007-2011	Dyna	68207-07A	68328-06A
2004-2006	Dyna	68207-00D	68328-06A
2000-2003	Dyna	68200-00D	68318-06
2011-2012	Softail®	41000021A	68328-06A
2007-2010	Softail (except FXCW/C)	68207-07A	68328-06A
2008-2010	FXCW/C	91684-08A	68328-06A
2003-2006	Softail	68207-00D	68328-06A
2000-2002	Softail	68207-00D	68319-06A
2007-2012	XL/XR	68200-07A	68352-06B
2004-2006	XL	68200-00D	68352-06B

*P/N 88115-03 Bank Angle Switch Kit (sold separately) and Security System P/N 68200-00D and 68200-07A are required for use on 2000-2008 FL Touring models equipped with a TLE/Ultra Sidecar.

**Pager function requires Remote Pager Receiver II P/N 91660-06 or 91672-07 (sold separately).

762 SECURITY & STORAGE

Locks & Keys

A. KEYED-TO-MATCH INDIVIDUAL REPLACEMENT LOCK PROGRAM

In the past, replacing a lock required the time and expense of re-keying a new lock or replacing all of the locks on your bike. Our Keyed-to-Match Program eliminates that hassle and allows you to order an exact replacement based on your lock's key code, right down to the quality you would expect from a stock Harley-Davidson® lock. Just ask your Dealer to refer to Bulletin Number 658B and they'll take care of your needs – lock, stock and barrel.

B. REMOTE CONTROL GARAGE DOOR OPENER KIT

Operate your automatic garage door opener without leaving your motorcycle seat or fumbling in your pocket for the remote control. Compatible with most brands of automatic openers, this kit allows you to operate your door by cycling the bike's high-beam switch. The hidden transmitter splices into your bike's wiring harness and is powered by your vehicle battery, so there are no transmitter batteries to replace. When your key is switched off the transmitter is disabled, providing added garage security if you park your bike outside. The signal is sent to the in-garage receiver that plugs into a standard 110-volt outlet and is wired to the automatic opener. The receiver's rolling code technology provides additional security. Kit includes one transmitter and one receiver. Individual components are available to equip additional motorcycles and garages.

91558-01A

Fits '02-later VRSC™, '94-later XL, '08-later XR, '96-later Dyna® and Softail®. ('12 Dyna and '11-later Softail models require separate purchase of Electrical Connection Kit P/N 72673-11.) Also fits '94-later Touring and Trike models.

1. Remote Control Garage Door Opener Transmitter

This kit allows owners of the Remote Garage Door Opener P/N 91558-01A to equip each of their Harley-Davidson motorcycles with a remote transmitter.

91561-01A

For use with Remote Garage Door Opener P/N 91558-01A.

2. Remote Control Garage Door Opener Receiver

This additional receiver permits the owner of the Remote Garage Door Opener P/N 91558-01A to operate more than one garage door opener from a single transmitter.

91562-01

For use with Remote Garage Door Opener P/N 91558-01A.

3. Remote Control Garage Door Opener Key Fob

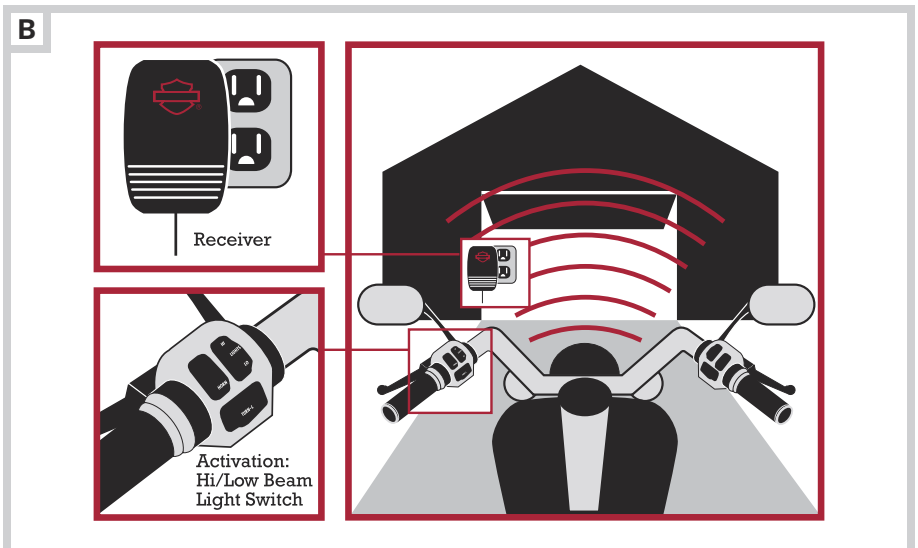
Operate your Harley-Davidson Remote Garage Door Opener from your car. This Key Fob fits on your key ring, and works with the rolling code technology of the receiver to provide added security. Because up to eight devices can be programmed for use with a single Remote Garage Door Opener Receiver, everyone in your family can have access. Two buttons can be set for use on multiple Remote Garage Door Openers. Indicator light shows Fob is working. Batteries included.

91569-01

For use with Remote Garage Door Opener Kit P/N 91558-01A.



A. KEYED-TO-MATCH INDIVIDUAL REPLACEMENT LOCK



B. REMOTE CONTROL GARAGE DOOR OPENER KIT



B. REMOTE CONTROL GARAGE DOOR OPENER KIT